

Field Bill of Material (FBM)

PN 80G2813

**Convert a 3746 Model 900 APPN attached to a 3745 17A
to
IBM 3746 Model 950**

Written by: J. Michaut
Illustrations by: S. Vaccaro
Checked by: M. Dallier / M. Maisonnnet
Approved by: A. Badino
Reviewed by: B. Smith

3746 FFBM	PN 80G2813 1 of 24	EC D55806A 15 MAR 96	EC E63492A 30AUG96			
--------------	-----------------------	-------------------------	-----------------------	--	--	--



PN 80G2813 2 of 24	EC D55806A 15 MAR 96	EC E63492A 30AUG96			
-----------------------	-------------------------	-----------------------	--	--	--

Before Installation (Steps 1-8)

1.0 Machines Affected

3746 Model 900 APPN attached to 3745 Model 17A

2.0 Related BMs and ECs

2.1 Prerequisites

(Must be installed prior to this installation)

- Network Control Point FC 5022 (FFBM 29H4170)

2.2 Concurrent

(Must be installed together)

- FFBM - Language Group (See table below).

FFBM	Language Group
29H4762	English
29H4763	French
29H4764	German
29H4765	Italian
29H4766	Spanish
29H4767	Japanese
Note: Only one of the above BM will be received, depending on the base machine language code.	

2.3 Companion

(May be installed together)

None.

3.0 BMs to be Used

- FFBM 80G2813 - Convert 3746-900APPN to 3746-950

4.0 Preparation

1. Check that all TRP and/or ESCP are type 2. If not inform the customer to order the MES(s) to exchange or remove the TRP and/or ESCP type 1:
 - Exchange ESCP FC 5500 by ESCP2 FC 5522 (FFBM 80G2809) and/or Remove ESCP FC 5500 (FFBM 09G2973)
 - Exchange TRP FC 5600 by TRP2 FC 5622 (FFBM 80G2807) and/or Remove TRP FC 5600 (FFBM 09G2973)
2. Check all items listed on the bill of material. Verify that all parts have been received.
3. Make sure that the re-installation areas, the floor cutout size and location areas are in accordance with Figure 1 or Figure 2. If not inform the customer.

Servicing Area.

- Front and back 0.75m (2.5ft)
- Right and Left at least 0.85m (2.8ft)

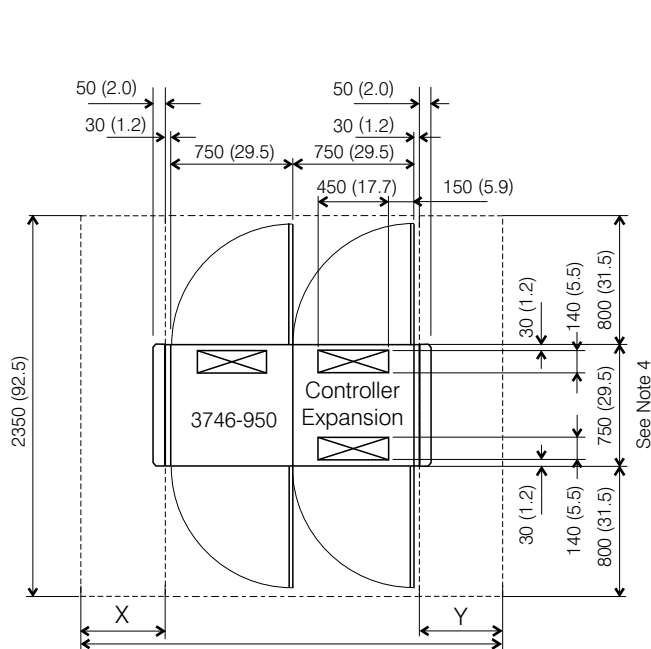


Figure 1. Plan View of a 3746-950 with Controller Expansion.

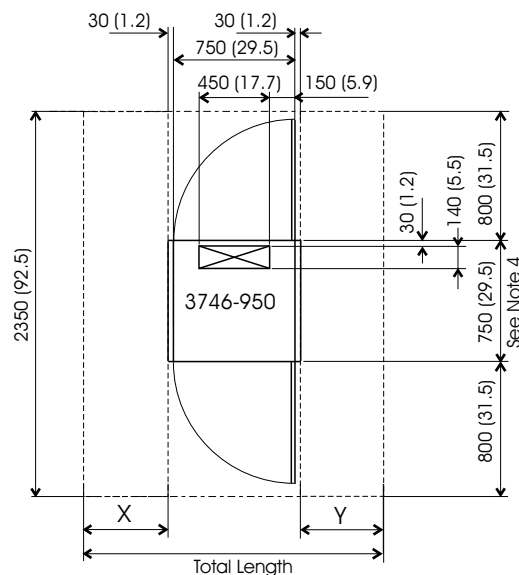


Figure 2. Plan View of a 3746-950 Alone

4. Familiarize yourself with the purpose and details of the installation instruction before negotiating machine time with the customer.

5.0 Programming

None

6.0 Purpose and Description

6.1 Purpose

Convert 3746-900 attached to 3745-17A, into 3746-950

6.2 Description

This Migration is divided into three main parts:

Electical/physical split

Software split

3746-900 and 3745-17A relocation.

7.0 Installation Time

FFBM	Machine Hours	System Hours	Nbr of CE
80G2813	6.0	0.0	1

8.0 Tools/Materials Required

- ESD kit (PN 6428316).

Installation (Steps 9-12)

9.0 Safety

Review the **Safety Notices** and the **Safety Inspection Procedures** located at the beginning of the *3745 Communication Controller Models 130 to 17A Maintenance Information Procedures*, SY33-2070

10.0 Details of Installation.

10.1 Powering Off the 3746-900

- 1. At the control panel, ensure that the Power Control window displays '3' (Local), and then push the Standby key.
- 2. **Switch** the main circuit breaker CB1 and CP1 **OFF** at the 3746-900 primary power box.

10.2 Powering Off the 3745

- 1. Press the **Power Off** key on the 3745 control panel.
- 2. **Switch CB1 to Off** at the primary power box

10.3 Removing the Ground Brackets from 3746-900 and 3745-17A.

All the following procedures can be used to remove the ground plates when the 3746-900 is installed on the either side of the 3745.

- 1. Remove plates **7** (PN 58G5308) on the edges of the ground plates installed.
- 2. Remove covers **5** (PN 58G5336) and **6** (PN 58G5340) on top of the ground plates **2** and **4**.
- 3. Extract the inter-machine cables from the slots and along the path provided by the ground plates installed.
- 4. Remove the ground plate **4** (PN 58G5306) on the bottom rear frame of the 3745.
- 5. Remove the ground plate **2** and the spacer **3** on the bottom rear frame of the 3746-900.
- 6. Remove plate PN 58G5335 on the front bottom of the 3746-900

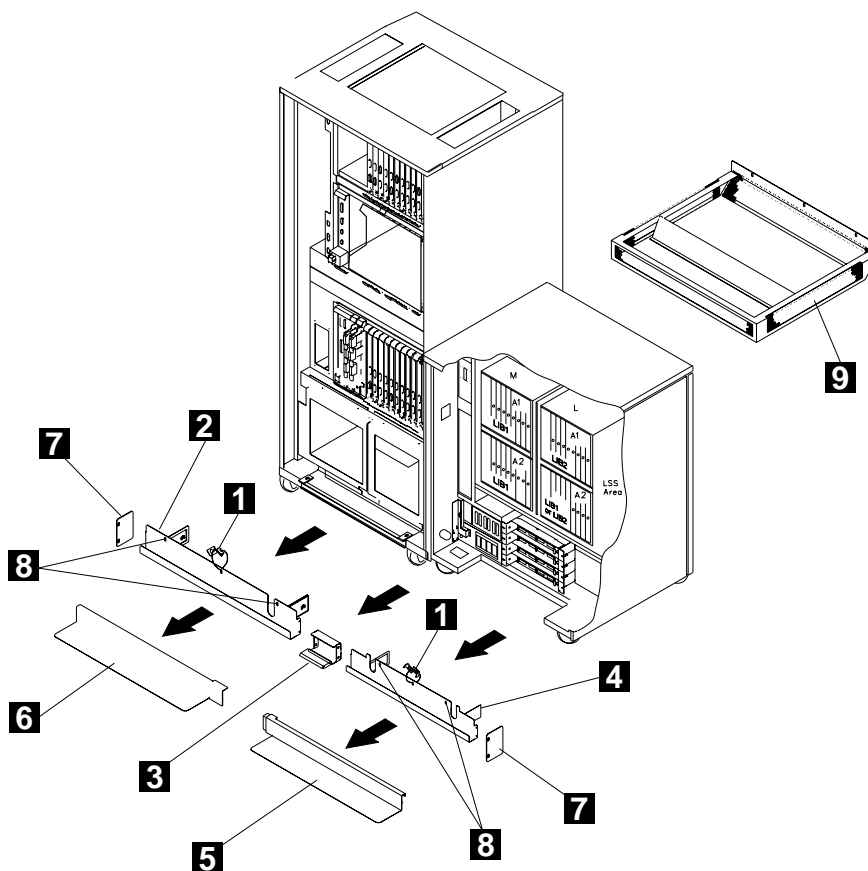


Figure 3. 3746-900 and 3745-17A Ground Brackets (Rear View).

10.4 Removing the power control and UEPO Cables

From the 3746-900:

- ___ 1. Disconnect the UEPO cable (PN 76F9341):
 - ___ a. Unplug the connector **1** from the distribution box (Position 07H-A1-J6), then
 - ___ b. Disconnect the ground lead from the frame **2**, (leave screw and lockwasher in place).
- ___ 2. Disconnect the Power Control cable (PN 17G5924):
 - ___ a. Unplug the connector **3** from 07J-A1-J1 of the optional power supply, or from the dummy connector **4** located on the filter box (if the optional power is installed).
 - ___ b. Disconnect the connector **5** from 07K-A1-J1 of the basic power supply.
 - ___ c. Disconnect the connector **6** from 07H-A1-3745 link of distribution box,
 - ___ d. Un-clamp the cable from the power supply, then route back the two cables to the rear side of the 3745 base frame.

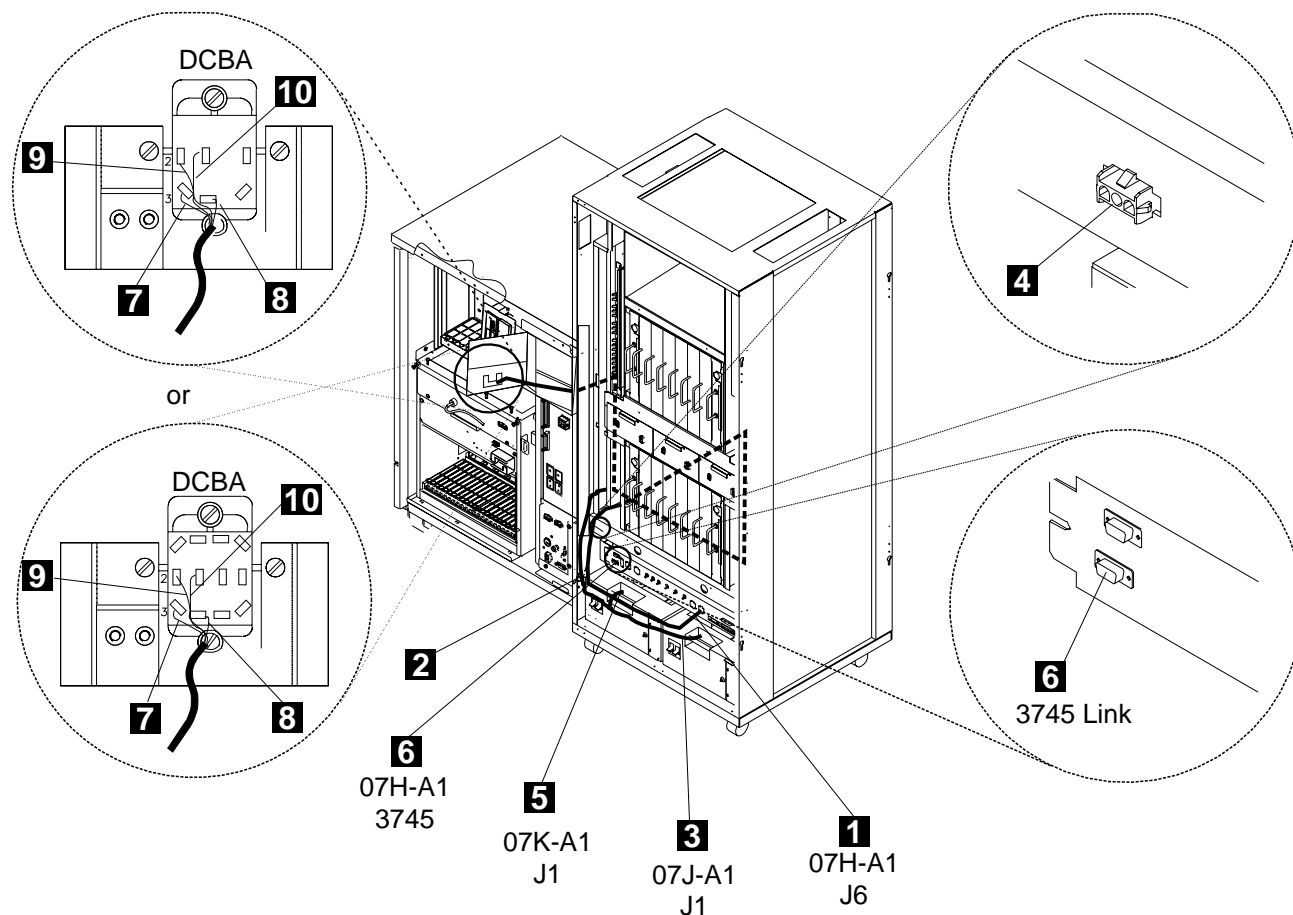


Figure 4. 3746-900 Power Control and UEPO cabling.

3746 FFBM	PN 80G2813 8 of 24	EC D55806A 15 MAR 96	EC E63492A 30AUG96			
--------------	-----------------------	-------------------------	-----------------------	--	--	--

From the 3745 Base Frame:

- ___ 3. Open the 3745 control panel. Locate the unit emergency power OFF (UEPO) switch at the rear of the control panel, then disconnect the UEPO cable leads **7** to **10** from the UEPO switch (See Figure 4 on page 8).
- ___ 4. On the 3745 rear side, disconnect the EPO connector **1** from the 3745 EPO tailgate in 01S-A0.
- ___ 5. Disconnect the ground lead **2** from the plug under the EPO plug.
- ___ 6. Disconnect connector **3** from J2.
- ___ 7. Detach the plate **4** from the 3745 frame (Re-install nuts, washers and screw).
- ___ 8. Remove the power control **5** and UEPO **6** cables from the 3745.

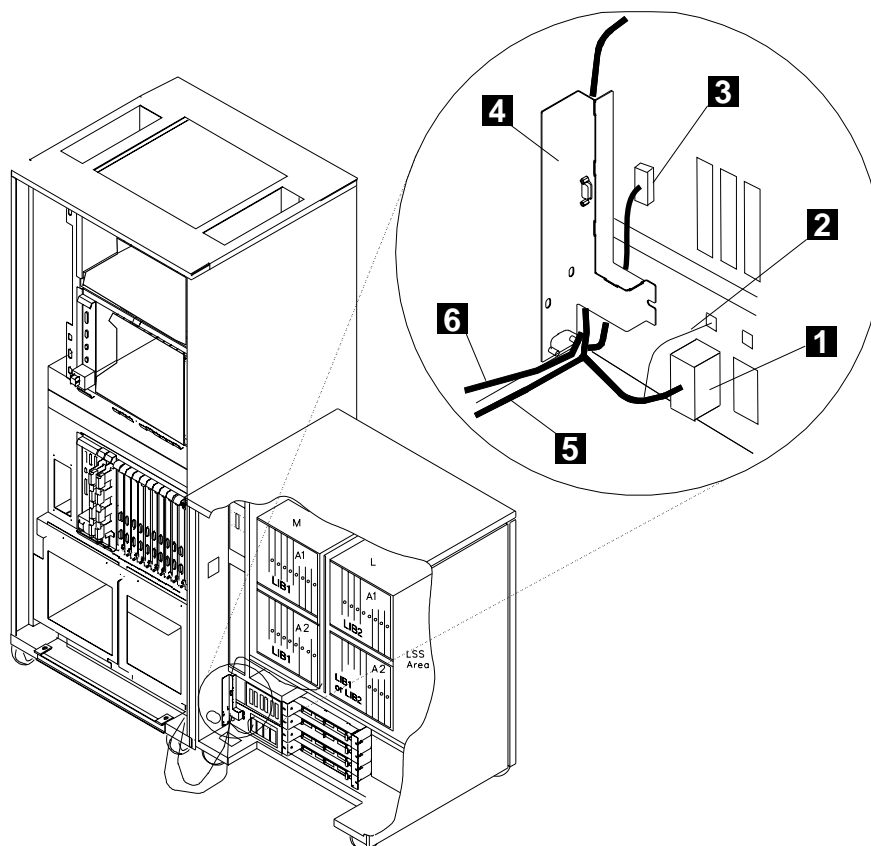


Figure 5. 3745-17A Power Control and UEPO cabling.

10.5 Removing the IOC and DMA Bus.

10.5.1 Removing the IOC and DMA Bus Cables.

From the 3745 Base Frame (Rear side):

- ___ 1. Remove 01G-A1 board cover **1**.
- ___ 2. Locate the buses connector positions 01G-A1 ZB, ZA, YK, and YJ:
Loosen and remove the retainers which maintain the connector cards.
Disconnect the buses connectors from their respective sockets 01G-A1 ZB and ZA for the IOC **2** and YK and YJ for the DMA **1**.
- ___ 3. Plug the terminator cards (PN 11F6054) in sockets 01G-A1 ZB and ZA and YK and YJ.
- ___ 4. Install the retainers (PN 03F5256) on top of the terminator cards using the screws used to maintain the IOC/DMA connector cards.
- ___ 5. Remove the IOC/DMA buses flat cables from the raceway, then route them into the bottom rear side of the and 3746-900 frame.
- ___ 6. re-install the board cover **1**.

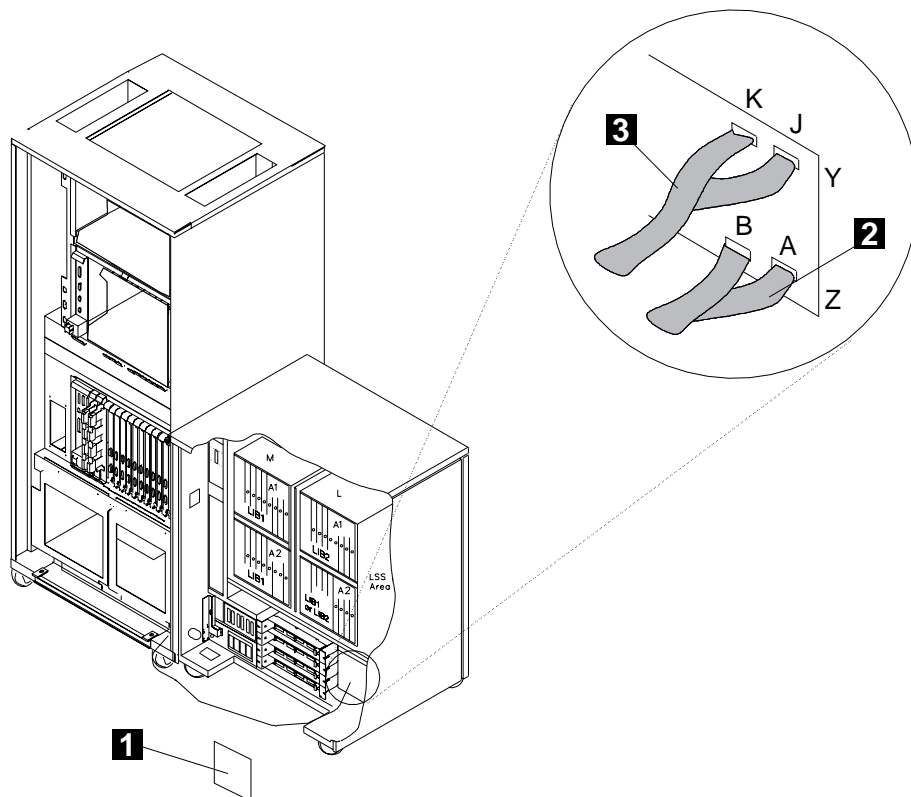


Figure 6. Routing of the IOC and DMA Cables.

From the 3746-900 (Rear side):

- ___ 7. Remove the covers **1** to **4**
- ___ 8. Loosen the four nuts **5** on the CBC Cassette.
- ___ 9. Unplug the cables **6** marked E1 and E2 from the CBC1 cassette and remove the two cable sets from the frame.
- ___ 10. Remove CBC **7** :
 Press the two unlocking buttons and pull out the cassette, then place the Cassette in an ESD protective bag.
- ___ 11. Install the dummy cassette (PN 03F7522), in position where the CBC card has been removed.
- ___ 12. Reinstall the **1** , **3** and **4** .

Note: Do not replace cover **4** , store them in the customer ship group.

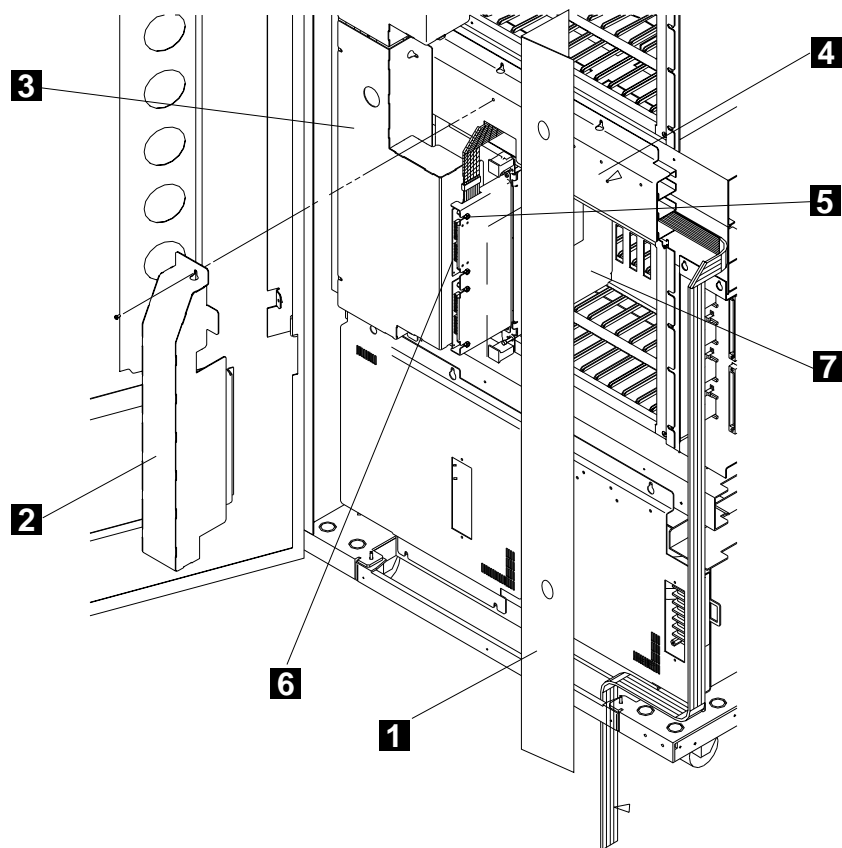


Figure 7. IOC/DMA Cable Termination on 3746-900.

10.5.2 Removing the Bypass Cards

1. Remove the basic board cover.

2. Remove the Bypass cards

Notes

A **BPC1** is installed in the positions normally occupied by a **CSC**, **CSP**, or **FESH** card (See table below).

A	B	C	D	E	F	G	H	J	K	L	M	N	P	Q	R	S	T	U	V	W	X
								TIC	TIC	TRM	BPC1 or CSC	BPC1 or CSC	BPC1 or CSC	BPC1 or CSC	BPC1 or CSP	BPC1 or FESH	BPC1 or CSP	BPC1 or FESH			

Figure 8. 3745-17A Basic Board (01G-A1).

- a. Remove the intermix brackets **1**.

b. Unplug all the **BPC1** cards **2**

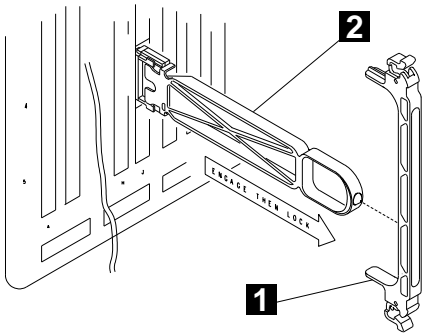


Figure 9. Removing a BPC1.

3. Obtain the dummy cards (PN 2733278), then plug in positions where the bypass cards have been removed.

4. Re-install the basic board cover.

10.6 Exchanging the Control Panel in the 3746

10.6.1 Removing the 3746-900 Control Panel

- 1. Remove the cover and the 4 screws **1**
- 2. Remove the clamp and the 2 screws **2**
- 3. Disconnect the connector **3** from the control panel.
- 4. Disconnect the connector **4** on the Operator panel card.
- 5. Remove the Operator panel card **5** and the 4 screws.
- 6. Remove the Keyboard/display card **6** and the 4 screws.
- 7. Remove the 3746-900 control panel **7**.
- 8. Remove the cover **8** and the 2 screws
- 9. Remove the shutter assembly **9** and the 4 screws
 - a. Remove the spacer **10** and the 2 screws
 - b. Remove the shutter **11**
 - c. Reinstall the spacer **10**
- 10. Reinstall the shutter assembly **9** and the 4 screws
- 11. Reinstall the cover **8** and the 2 screws.

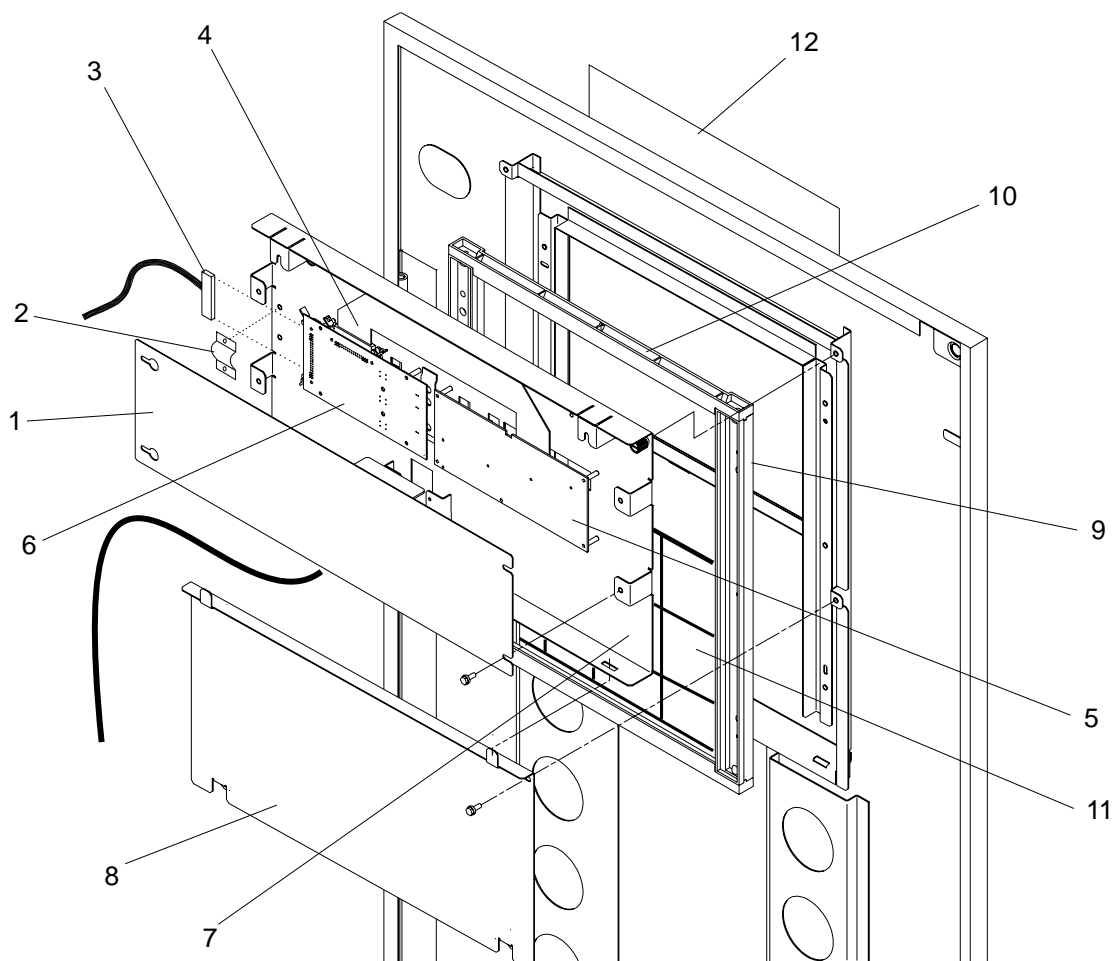


Figure 10. Control Panel Conversion to 3746-950.

3746 FFBM	PN 80G2813 13 of 24	EC D55806A 15 MAR 96	EC E63492A 30AUG96			
--------------	------------------------	-------------------------	-----------------------	--	--	--

10.6.2 Installing the 3746-950 Control Panel.

Refer to Figure 10 on page 13

- ___ 1. Obtain the overlay **12** from the language group, then stick it on the new control panel (58G5699).
- ___ 2. Install the new control panel assembly **7**
- ___ 3. Reinstall the Operator panel card **6** and the 4 screws
- ___ 4. Reinstall the Keyboard/display card **5** and the 4 screws
- ___ 5. Reconnect the connector **4** on the Operator panel card.
- ___ 6. Reconnect cable **3** and fasten it with the clamp **2**.
- ___ 7. Reinstall cover **1**.
- ___ 8. Route the UEPO cable **13** thru the clamp along the frame to the bottom of the machine, then connect it to the distribution box (Position 07H-A1-J6) See Figure 11.

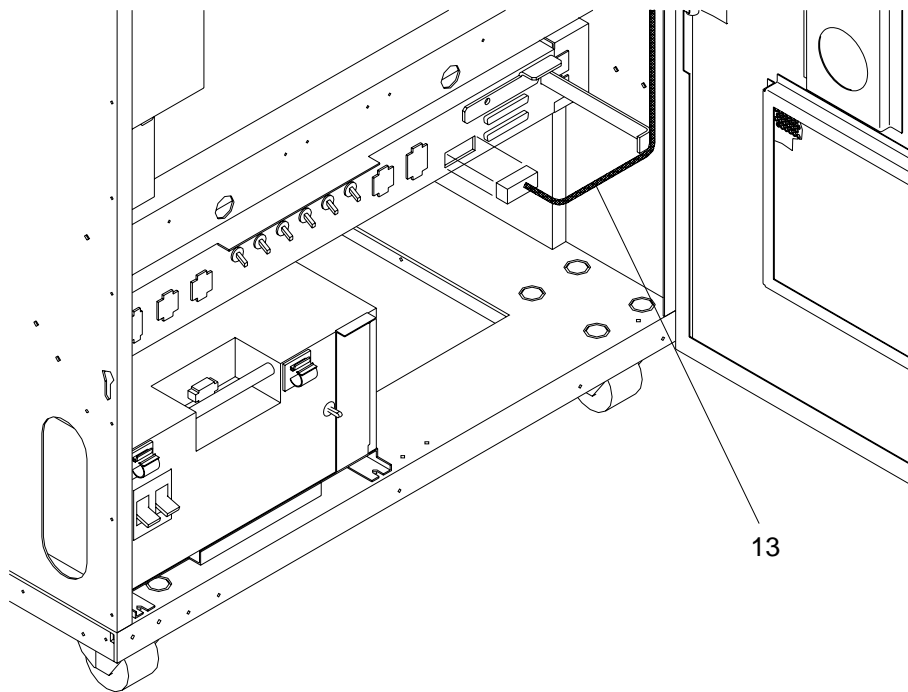


Figure 11. 3746-950 UEPO Cable connection.

10.6.3 Installing the 3746-950 Nameplates and Component Location Label.

- ___ 1. On the front and rear doors, replace **IBM 3746 Model 900** nameplates with the **IBM 3746 Model 950** ones (PN 58G5573).
- ___ 2. On the rear doors, stick the 3746-950 component location label (PN 58G5574) on the 3746-900 label.

3746 FFBM	PN 80G2813 14 of 24	EC D55806A 15 MAR 96	EC E63492A 30AUG96			
--------------	------------------------	-------------------------	-----------------------	--	--	--

10.7 Setting the Service Processor.

10.7.1 Powering ON the 3746-950

- ___ 1. **Switch** the main circuit breaker CB1 and CP1 to **ON**, at the 3746-900 primary power box.
- ___ 2. Turn to **ON** the control panel switch.
- ___ 3. At the control panel, ensure that the Power Control window displays '3' (Local).

10.7.2 Powering ON the 3745

- ___ 1. Switch CB1 to **ON** at the primary power box
- ___ 2. Press the **Power ON** key on the 3745 control panel.

10.7.3 Splitting the 3746-900 and 3745.

- ___ 1. Enter the Service Processor Maintenance Password (*default is: IBM3745*)
- ___ 2. Double click on the "**Service Processor object icon**".
- ___ 3. Click on "**Configuration Management**".
- ___ 4. Double click on "**Manage 3745/3746-9x0 installation/Removal**"
- ___ 5. On the Controller Installation menu, click on the 3745/3746-9x0 to be split.
- ___ 6. Click on **3746 M.E.S 900 => 950** button.
- ___ 7. When general IML message appears, click on **OK**
- ___ 8. Follow the instructions.
- ___ 9. When successfully ended message appears, click on **OK**
- ___ 10. The Service processor reboot, follow the instructions.

10.7.4 Saving Configuration Parameters on diskette.

- ___ 1. Enter the Service Processor Maintenance Password
- ___ 2. Double click on the **Service Processor** object icon.
- ___ 3. Click on "**Configuration Management**".
- ___ 4. Double click on the new **3746NN** object icon, then click on **Save**.
- ___ 5. When prompted, insert **3746-9x0 Installation Parameters** diskette (PN 17G5878).

Important

Repeat the procedure on all **3746-9x0 Installation Parameters** diskette copies.

10.8 Relocating the 3746-950 or 3745-17A.

- ___ 1. Power **OFF** the 3745-17A (See 10.2, "Powering Off the 3745" on page 6), 3746-950 (See 10.1, "Powering Off the 3746-900" on page 6).
- ___ 2. If the Controller Expansion is connected to the 3746-950, Power **OFF** the equipment installed in the Controller Expansion
- ___ 3. Switch or ask the customer to switch the branch circuit breaker that feeds the 3746-950, 3745-17A and Controller Expansion to the **OFF** position.
- ___ 4. Disconnect the External Cables and Main Power Cord
Note: It is advisable to disconnect the cables, starting at the top of the machine and working down.
- ___ 5. Undo the caster locking screws.
- ___ 6. Ensuring all cables have been disconnected, move the 3746-950 or the 3745-17A away.
- ___ 7. Move the 3746-950 or 3745-17A frame to it's planned location, then tighten the casters lock screws.
- ___ 8. Re-install the external cables and main power cord.

10.8.1 Installing the Ground Brackets on 3746-950.

If the Controller Expansion is:

- **Attached** to the 3746-950 frame go to 10.8.1.1, "Installing the 3746-950 and Controller Expansion Ground Brackets."
- **Detached** from the 3746-950 frame, go to 10.8.1.2, "Installing the 3746-950 Ground Brackets" on page 18.

10.8.1.1 Installing the 3746-950 and Controller Expansion Ground Brackets

- ___ 1. Remove the end covers **1**
- ___ 2. Remove the ground plate **2**
- ___ 3. Install the end ground plates **3** (PN 58G5676) using screws (PN 2665527).
- ___ 4. Install the front ground plate **4** (PN 58G5677) and the rear bracket **5** (PN 58G5675) using screws (PN 2665527).
- ___ 5. Install the rear brackets **6** (PN 58G5675) using screws (PN 2665527).

Note: Before securing the ground plate screws, push down on the plate to give it maximum contact with the floor.

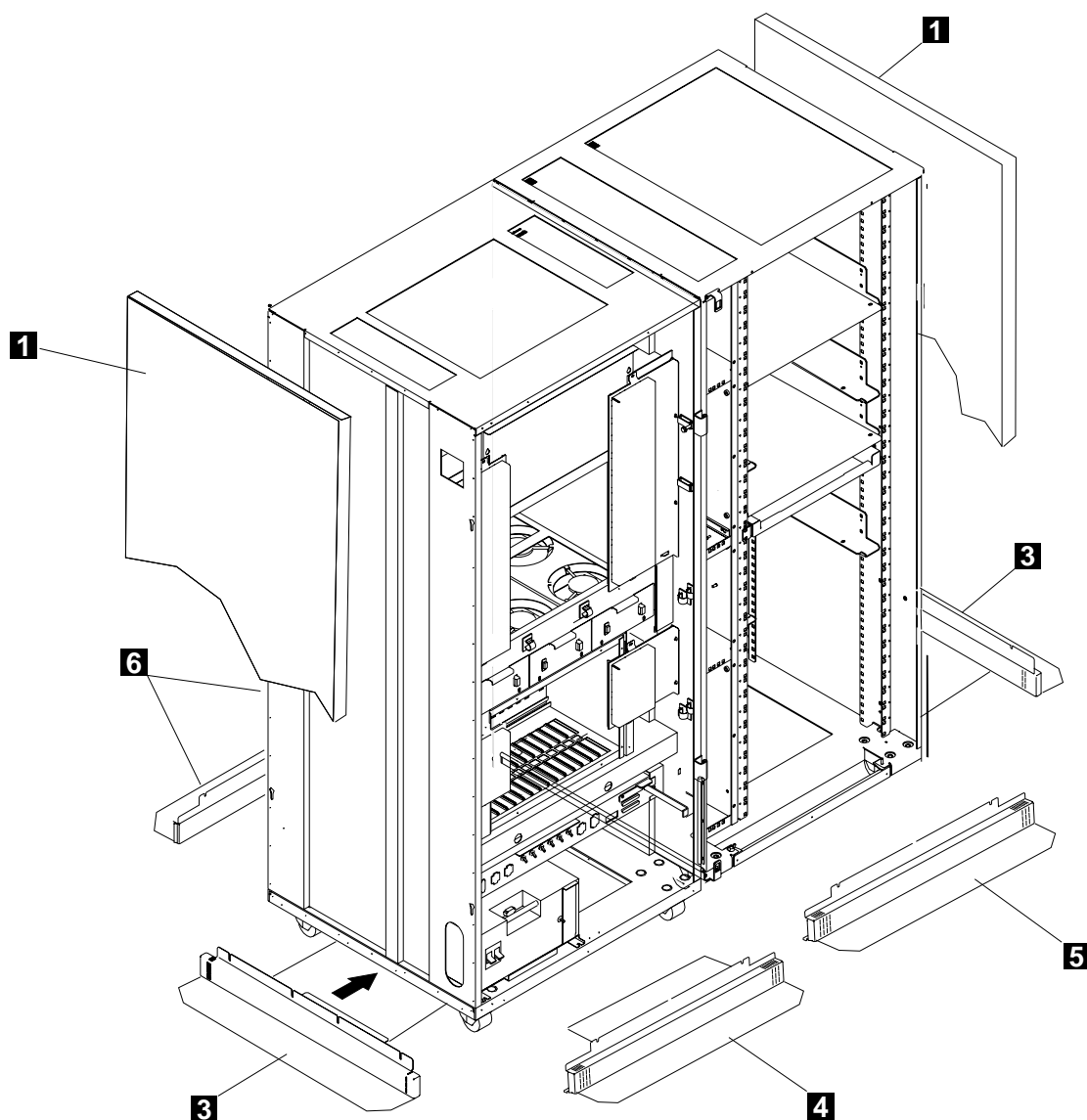


Figure 12. 3746-950 and Controller Expansion Ground Brackets (Front View).

Go to 10.8.2, “Installing the Ground Wire” on page 19 .

10.8.1.2 Installing the 3746-950 Ground Brackets

- 1. Remove the end covers **1**, then
- 2. Remove the ground plates **2** on both side.
- 3. Install the right and left brackets **3** (PN 58G5676) using screws (PN 2665527).

Note: Before securing the ground plate screws, push down on the plate to give it maximum contact with the floor.

- 4. Install the front ground plate **4** (PN 58G5677) and rear ground plate **5** (PN 58G5675) using screws (PN 2665527) then re-installed covers **1**.

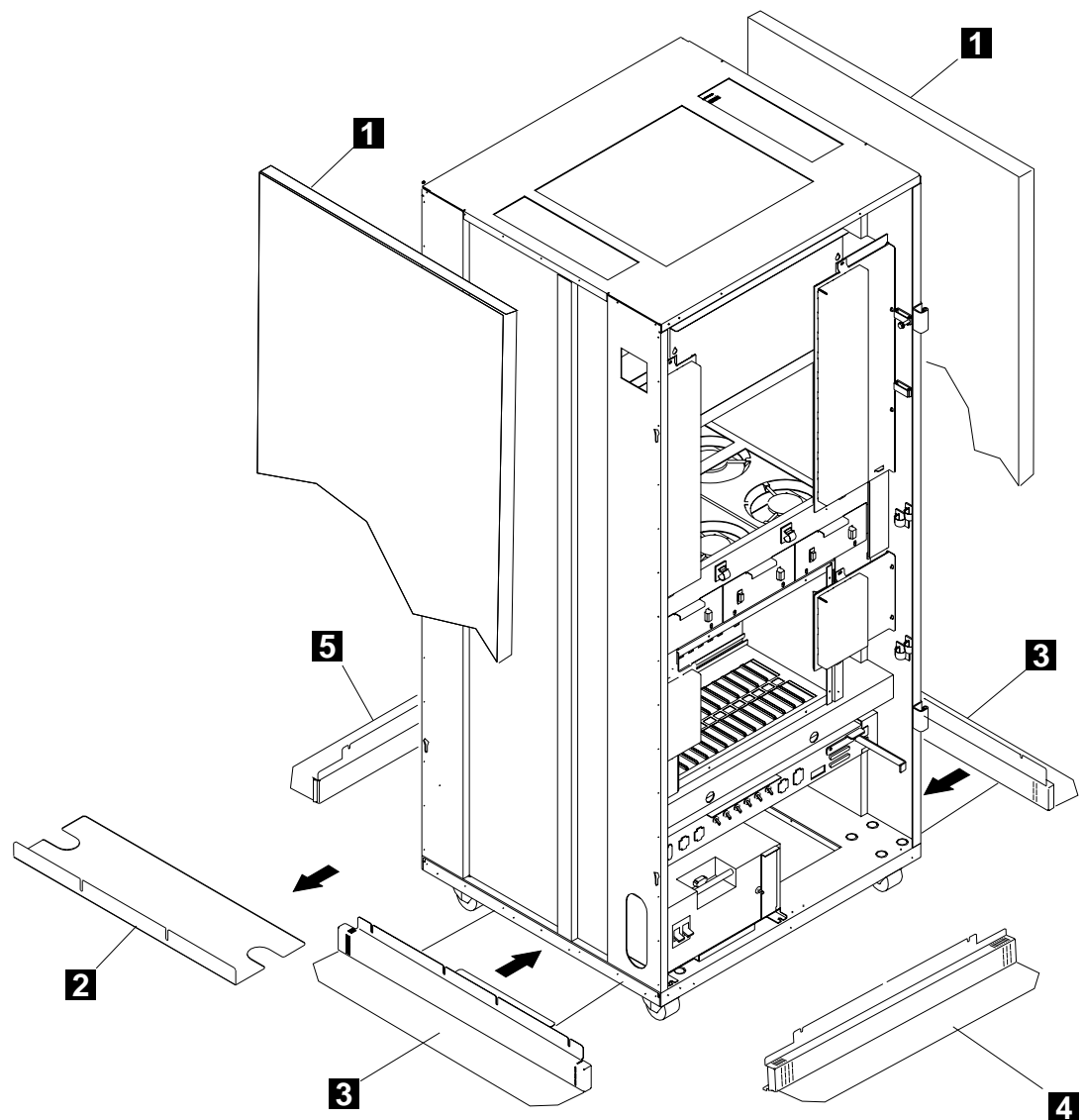


Figure 13. 3746-950 Ground Brackets (Front View).

10.8.2 Installing the Ground Wire

If the Controller Expansion is:

- **Attached or at 6m or less** to the 3746-950 go to 10.8.2.1, "Controller Expansion Attached or at 6m or less."
- **At more than 6m** to the 3746-950 go to 10.8.2.2, "Controller Expansion at More than 6m." on page 20

10.8.2.1 Controller Expansion Attached or at 6m or less.

1. Connect a ground wire (PN 58G5691) to the Controller Expansion and the other end to the building ground.
2. Connect a ground wire (PN 58G5691) to the Controller Expansion and the other end to 3746-950

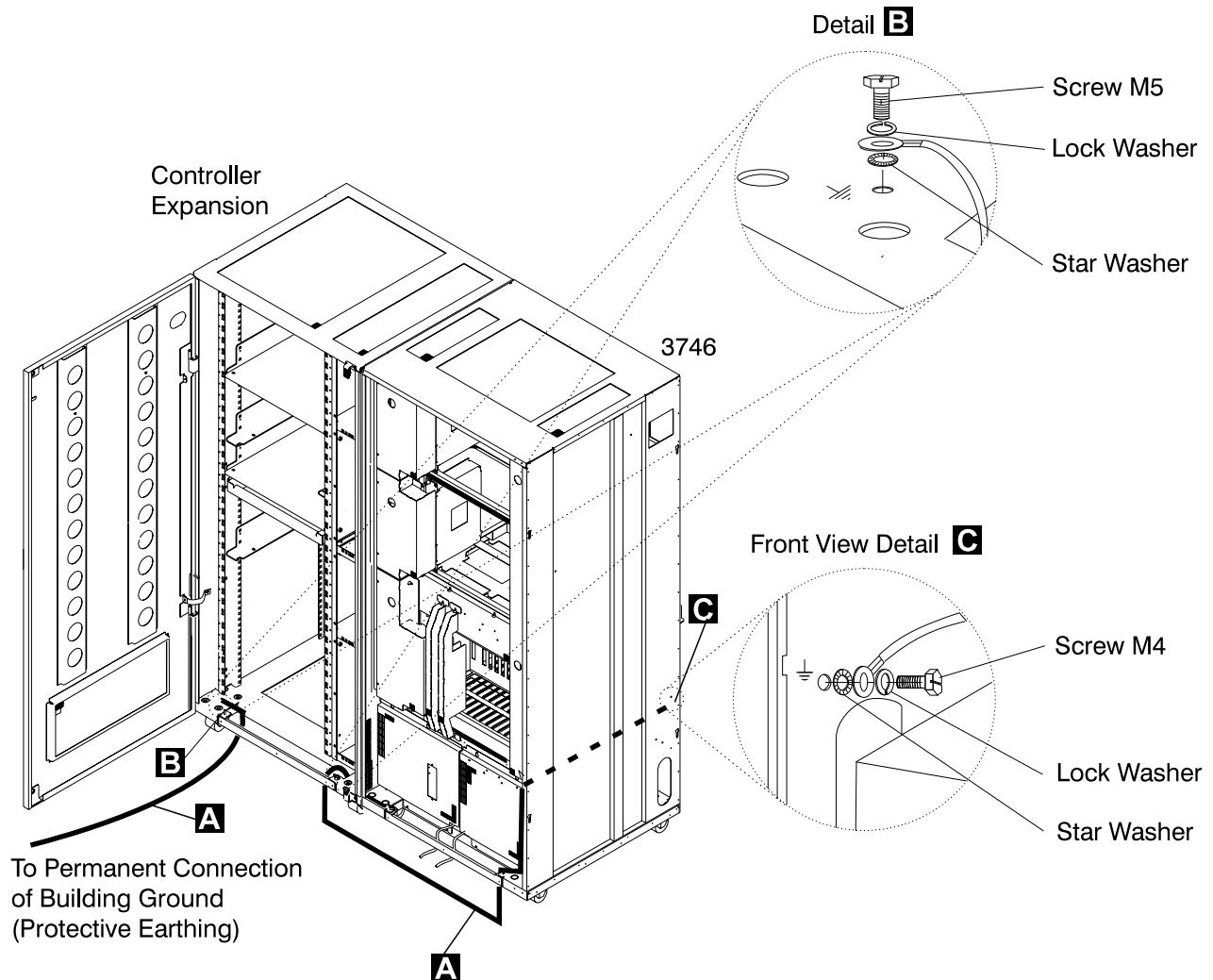


Figure 14. Controller Expansion attached or at less than 6m to 3746-950

Go to 11.0, "Test Procedures" on page 23.

3746 FFBM	PN 80G2813 19 of 24	EC D55806A 15 MAR 96	EC E63492A 30AUG96			
--------------	------------------------	-------------------------	-----------------------	--	--	--

10.8.2.2 Controller Expansion at More than 6m.

- 1. Connect a ground wire (PN 58G5691) to the Controller Expansion and the other end to the building ground.
- 2. Connect a ground wire (PN 58G5691) to the 3746-950 and the other end to the building ground.

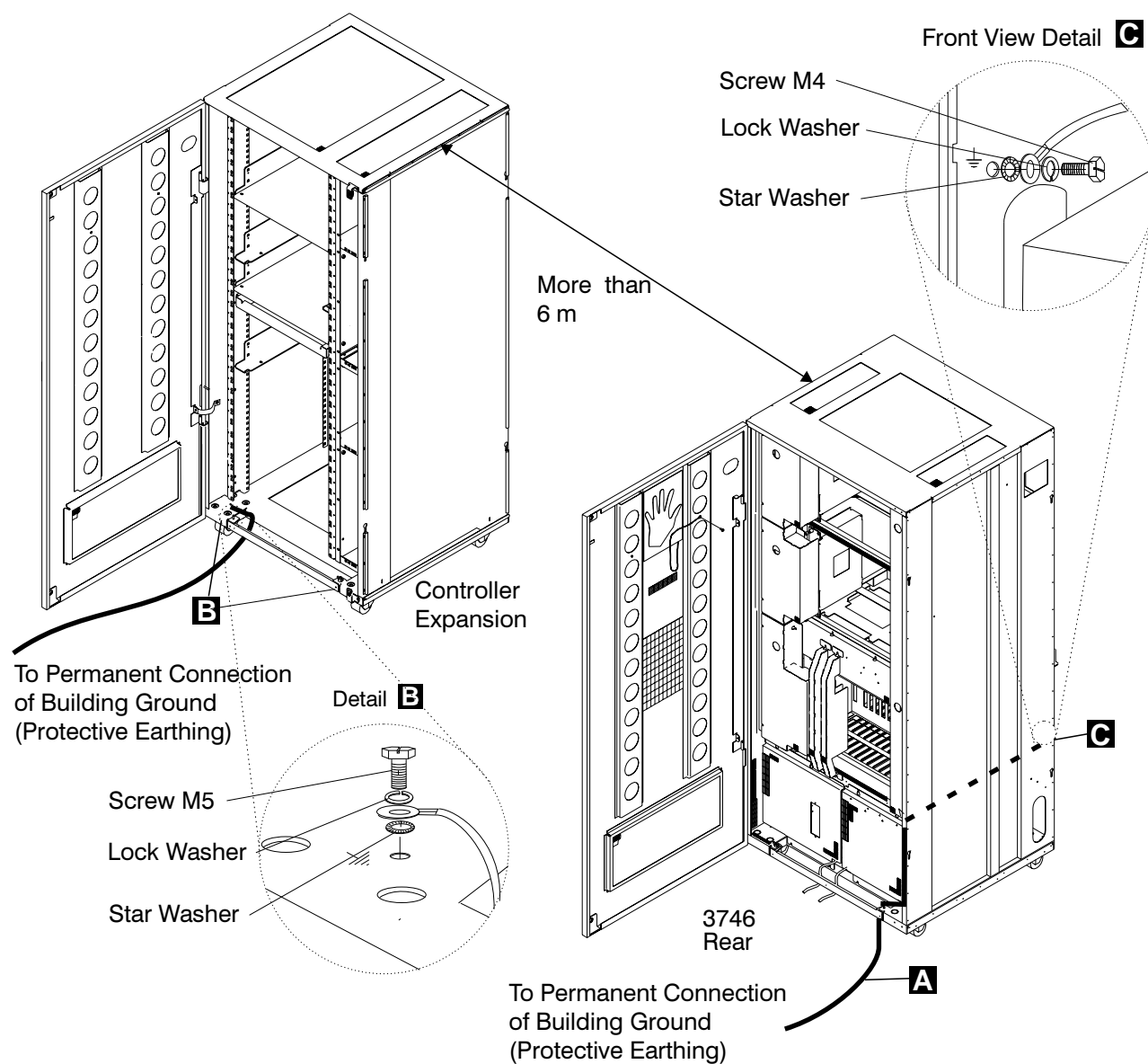


Figure 15. Controller Expansion at more than 6m to 3746-950

10.8.3 Powering ON the Controller Expansion and 3746-950

- ___ 1. Switch or ask the customer to switch the branch circuit breaker that feeds the 3746-950 and Controller Expansion to the **ON** position.
- ___ 2. Power **ON** all the equipment in the Controller Expansion attached to the 3746-950.
- ___ 3. Powering ON the 3746-950
 - ___ a. **Switch** the main circuit breaker CB1 and CP1 **ON** at the 3746-900 primary power box.
 - ___ b. At the control panel, ensure that the Power Control window displays '3' (Local),

10.8.4 Removing the Bracket-Spacer on the 3745-17A

- ___ 1. Remove the 4 screws **1** and the 3745-17A top cover **2**
- ___ 2. Remove the bracket-spacer (PN 58G5428) **3** on either the left or right top side of the 3745-17A.
- ___ 3. Reinstall the top cover **2** and the 4 screws **1**.

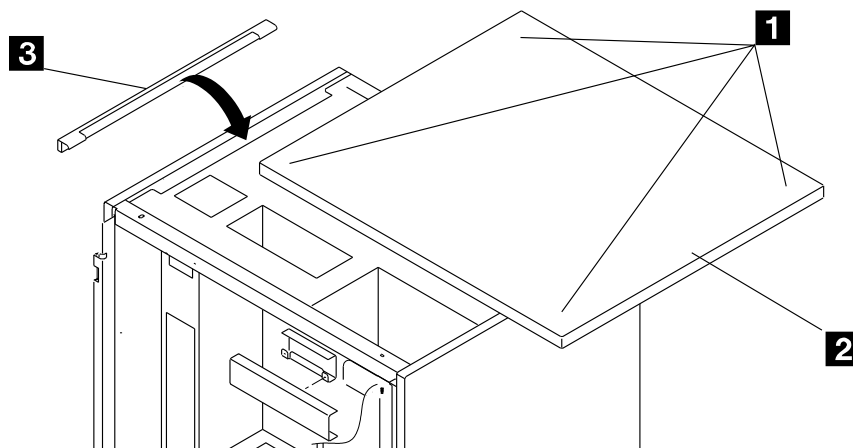


Figure 16. Bracket-Spacer Installation

10.8.5 Installing the Ground Brackets on 3745-17A.

- 1. Install the ground plate **1** (PN 58G5306) on the bottom rear frame of the 3745 using three screws (PN 1621210). Do not tighten the screws now.
- 2. Install covers **2** (PN 58G5336) on top of the ground plate **1**.
- 3. Secure the cover **2** by sliding brackets **3** in the screws **4**. When the brackets are in place, tighten all the screws which maintain the ground plate **1**.
- 4. Install plates **5** (PN 58G5308) on the edges of the ground plates installed using four screws (PN 1621191).

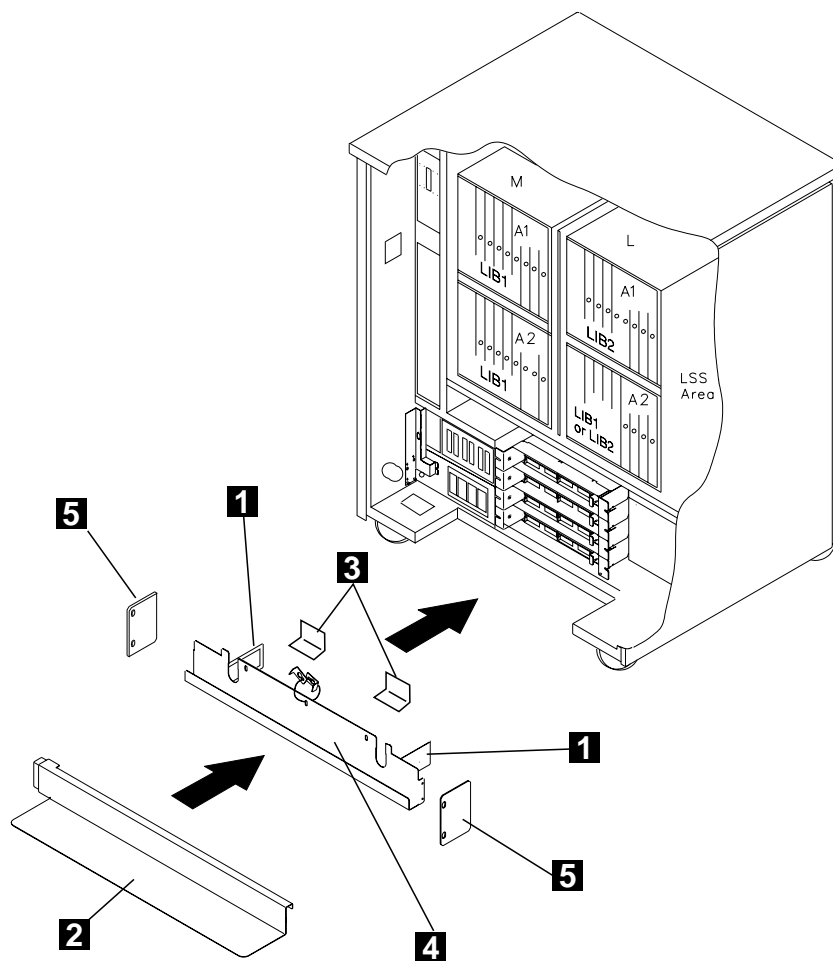


Figure 17. 3745-17A Ground Brackets (Rear View).

10.8.6 Powering ON the 3745

- ___ 1. Switch or ask the customer to switch the branch circuit breaker that feeds the 3745-17A to the **ON** position.
- ___ 2. Switch CB1 to **ON** at the primary power box
- ___ 3. Press the **Power ON** key on the 3745 control panel.

10.8.7 Testing the 3745

- ___ 1. Run **CDF verify** (refer to chapter " CDF Verify" *3745/210-61A Service Functions*, SY33-2055, or *3745 Communication Controller Models 210 to 61A Maintenance Information Procedures*, SY33-2054 in case of a problem.
- ___ 2. Run the IOC and DMA diagnostics
- ___ 3. Ask the customer to re-start and check the network on the 3745.

10.9 Returning the Machine to the Customer

- ___ 1. Inform the Customer that the 3746-950 and 3745-17A are now ready for operation.

11.0 Test Procedures

Not applicable

After Installation (steps 12-15)

12.0 Field Updating

Ensure that both the 3745 and 3746-9x0, types and models, are registered in RETAIN (CCPF).

For U.S.A machines, please call the Raleigh Multiplexor Support Center and verify your machine's registration in CCPF for:

- The seven digit serial number of the 3745 and 3746-9x0 are correct.
- The three digit model designation for the 3745 and 3746-9x0 are correct.

13.0 Publications Update

Install the 3746-950 documentation delivered according to the Publication Reference Drawing (PRD).

14.0 Parts Disposition

15.0 Machine Records

- Record in the **MACHINE HISTORY** the new EC D55806 installed.
- Report installation and quality to existing procedures.

End of instructions.