

PACIFIC LOCK COMPANY



THE FUTURE OF PADLOCKS™

WHY PACLOCK?

USA QUALITY. ON-TIME. PERSONAL.



Aggressiveness, dedication to innovation, a tireless commitment to quality and unparalleled customer service are our family's continued focus. We are never satisfied with accepting the status quo. Our products and services offer a fresh look at how the physical security industry meets its everyday challenges. PACLOCK is creating locking solutions never before seen and, as such, every other manufacturer is struggling to keep up with us.

Our USA-based manufacturing capabilities have increased dramatically over the recent years as we've met the call for higher quality, shorter lead times, and smaller production runs. No other company can match PACLOCK's ability to design a custom padlock, prototype that padlock, and then reliably and consistently produce that padlock in short runs with affordable pricing. We are unique.

As PACLOCK looks toward the future, what we see is the emergence of the hockey-puck as the "Gold-Standard" for security. The hockey-puck is widely regarded as the most resilient design for a padlock ~ but the inherent problem is how to attach it.

Throughout this catalog are ingenious methods using a hockey-puck to provide ultra-high security for your gates, fences, truck doors, van doors and the like. No other company can make the same claim.

Our “Your Logo, Your Locks”™ program is still years ahead of any other manufacturer. PACLOCK can custom engrave logos, serial numbers, “Property of” or just about anything you want onto the padlocks. We can engrave on our hardened, solid-steel black powder coated padlocks – no other company in the world does this!

From large, national distributors to small lock shops across the country, our products are providing a superior choice to what has almost become a one-manufacturer show. Shorter lead times, smaller order quantities, highly custom products, and innovative locking solutions are what set our company apart.

As a family business, we value our employees and our community. Much of our workforce is second-chance opportunities and one in five of our workforce is disabled. We are also committed to employing those who have served our country. As a veteran, I understand the importance of providing job opportunities to our former military personnel. As our company grows, so will our ability to hire disabled, disadvantaged and veteran workers.

As you flip through our catalog, our family challenges you to rethink how you do physical security. Now is the time to learn how our inventive products can solve even your toughest security challenges. Come join us in becoming “The Future of Padlocks.”

Gregory B. Waugh
President & CEO
Pacific Lock Company



SFIC SERIES - SHACKLED

SMALL FORMAT INTERCHANGEABLE CORE



PACLOCK's solid body, Small Format Interchangeable Core (SFIC) padlocks accept 5, 6, and 7-pin cores (cores not included). With the largest variety of padlock styles and shackle diameters to choose from, PACLOCK leads the way for your SFIC security needs.

All of the solid padlock bodies featured in this catalog are designed, precision CNC'd, assembled, quality tested and approved in the USA. The steel locks are heat treated and nickel plated in the USA. The brass locks are nickel plated in the USA. And the aluminum locks are anodized in the USA. Your support of PACLOCK supports a variety of American businesses.



Wide variety of shackle heights available including 2" & 3".

Available in aluminum, brass, and hardened steel bodies.

Dual locking ball technology offers superior pull resistance and prevents shimming.

Take advantage of the "Your Logo, Your Locks"™ program for ultimate customization.

"200-IC" Hardened Steel Series

Locks can be made key retaining for increased security.

Compatible with cores from Medeco®, Arrow®, Best® and all other SFIC manufacturers. Core not included.



"90A-IC" Series



"150-IC" Series



"200-IC" Series

ALUMINUM SFIC

"90A-IC" SERIES

- 1-1/2" Body Width
- 1/4" Shackle Diameter

"100A-IC" SERIES

- 1-3/4" Body Width
- 5/16" Shackle Diameter

"200A-IC" SERIES

- 2" Body Width
- 3/8" Shackle Diameter

SHARED FEATURES

- Aircraft Grade Aluminum Body
- 1-3/16" Tall Hardened Steel Shackle Standard
- 2" and 3" Hardened Steel Shackle Heights Available for All Series
- 3/4" & 1-1/2" Hardened Steel Shackles Available on "90A-IC" Series
- 1-3/16", 2" & 3" Stainless Steel Shackles Available for All Series
- Mil Spec Type II Anodized
- Ten Anodized Colors Available
- "Your Logo, Your Locks"™ Engraving Available

BRASS SFIC

"95-IC" SERIES

- 1-1/2" Body Width
- 1/4" Shackle Diameter

"150-IC" SERIES

- 1-3/4" Body Width
- 5/16" Shackle Diameter

"250-IC" SERIES

- 2" Body Width
- 3/8" Shackle Diameter

SHARED FEATURES

- Solid Brass Body
- 1-3/16" Tall Hardened Steel Shackle Standard
- 2" and 3" Hardened Steel Shackle Heights Available for All Series
- 3/4" & 1-1/2" Hardened Steel Shackles Available on "95-IC" Series
- 1-3/16", 2" & 3" Stainless Steel Shackles Available for All Series
- Electroless Nickel Plating
- "Your Logo, Your Locks"™ Engraving Available

HARDENED STEEL SFIC

"100-IC" SERIES

- 1-3/4" Body Width
- 5/16" Shackle Diameter

"200-IC" SERIES

- 2" Body Width
- 3/8" Shackle Diameter

SHARED FEATURES

- Hardened Steel Body
- 1-3/16" Tall Hardened Steel Shackle Standard
- 2" & 3" Hardened Steel Shackle Lengths Available
- 1-3/16", 2" & 3" Stainless Steel Shackles Available for All Series
- Electroless Nickel Plating
- "Your Logo, Your Locks"™ Engraving Available on Black Powder Coated Hardened Steel Lock



"900-IC" Series

"900-IC"

- Hardened Solid Steel Body
- 2-1/2" Body Width
- 7/16" Shackle Diameter
- 1-3/16" Tall Hardened Steel Shackle Standard
- 2" and 3" Hardened Steel Shackle Heights Available
- Electroless Nickel Plating
- "Your Logo, Your Locks"™ Engraving Available on Black Powder Coated Hardened Steel Lock



"200A-IC" available in ten standard colors. Custom colors available.

"200-IC" & "250-IC" Series

* Cores not included

SFIC SERIES - SHACKLELESS

SMALL FORMAT INTERCHANGEABLE CORE



PACLOCK's unique patented solid body, Small Format Interchangeable Core (SFIC) Shackleless hockey-puck padlocks accept 5, 6, and 7-pin cores (cores not included). With the largest variety of padlock styles, shackle options and shackleless padlocks to choose from, PACLOCK leads the way for your SFIC security needs.

All of the solid padlock bodies featured in this catalog are designed, precision CNC'd, assembled, quality tested and approved in the USA. The steel locks are heat treated and nickel plated in the USA. The brass locks are nickel plated in the USA. And the aluminum locks are anodized in the USA. Your support of PACLOCK supports a variety of American businesses.



"2170-IC2" Series

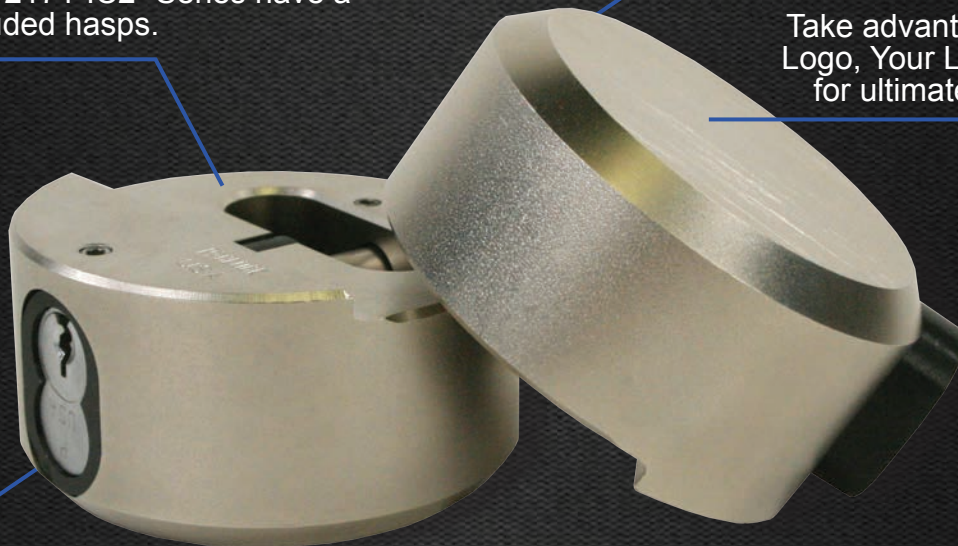


U.S. Patent 8,776,557

The "400-IC2" Series has a stepped back cut-out for bar-style hasps. The "2170-IC2", "2170A-IC2" and "2171-IC2" Series have a flat back for shrouded hasps.

The "2170-IC2" Series available in aluminum and hardened steel bodies. The "400-IC2" and "2171-IC2" Series available in hardened steel.

Take advantage of the "Your Logo, Your Locks"™ program for ultimate customization.



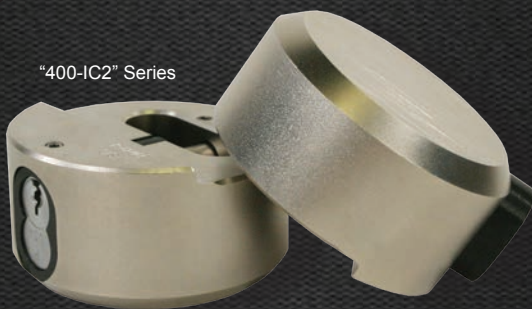
Compatible with cores from Medeco®, Arrow®, Best® and all other SFIC manufacturers. Core not included.

"400-IC2" Hardened Steel Series

"400-IC2"

- 2-7/8" Body Diameter
- Hardened Solid Steel Body
- Electroless Nickel Plated
- Hidden Shackle Design
- Patented Design
- Stepped Back Cut-out Works with Bar-style Hasps
- "Your Logo, Your Locks"™ Engraving Available on Black Powder Coated Hardened Steel Lock

"400-IC2" Series



U.S. Patent 8,776,557

"2170-IC2"

- 2-7/8" Body Diameter
- Hardened Solid Steel Body
- Electroless Nickel Plated
- Hidden Shackle Design
- Patented Design
- Works with Shrouded Hasps
- "Your Logo, Your Locks"™ Engraving Available on Black Powder Coated Hardened Steel Lock

"2170A-IC2" Series



"2170-IC2" Series

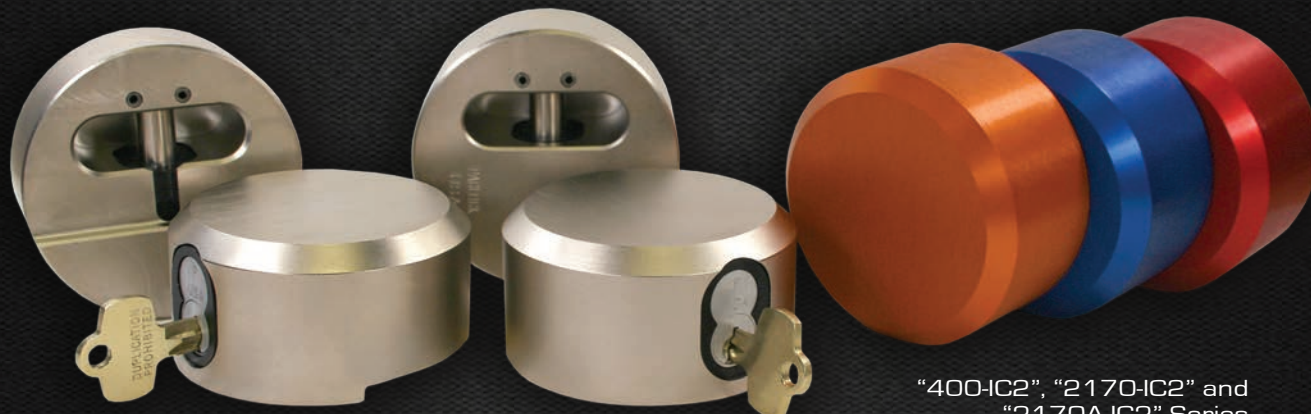
"2170A-IC2"

- 2-7/8" Body Diameter
- Aircraft Grade Aluminum Body
- Mil Spec Type II Anodized
- Ten Anodized Colors Available
- Hidden Shackle Design
- Patented Design
- Works with Shrouded Hasps
- "Your Logo, Your Locks"™ Engraving Available

"2171-IC2"

- 2-7/8" Body Diameter
- Hardened Solid Steel Body
- Electroless Nickel Plated
- Hidden Shackle Design
- Patented Design
- Flat Back Design with 2 Tapped Holes Works with Shrouded Hasps
- "Your Logo, Your Locks"™ Engraving Available on Black Powder Coated Hardened Steel Lock

"2171-IC2" Series



"400-IC2", "2170-IC2" and
"2170A-IC2" Series

* Cores not included

KiK SERIES - SHACKLED

KEY-IN-KNOB CYLINDER



PACLOCK's "KiK" (Key-In-Knob) Series of padlocks offer never before seen versatility and breadth of scope. Our shackled KiK Series The "KiK-1", "KiK-2", and "KiK-3" series offer affordable security in either a solid brass or solid aluminum body styles. Cylinders not included.

All of the solid padlock bodies featured in this catalog are designed, precision CNC'd, assembled, quality tested and approved in the USA. The steel locks are heat treated and nickel plated in the USA. The brass locks are nickel plated in the USA. And the aluminum locks are anodized in the USA. Your support of PACLOCK supports a variety of American businesses.



"KiK-1B" Brass Series

Stainless steel shackle option available for increased weather resistance.

Dual-locking ball bearings means this lock is 63% stronger than lever locking.

"A" Series manufactured from Aircraft Grade 6061 aluminum and available in ten anodized colors.

"B" Series manufactured from solid brass with electroless nickel plating.

"KiK-3A" Aluminum Series

"KiK-3B" Brass Series

Take advantage of "Your Logo, Your Locks"™ program for ultimate customization.

Our KiK padlock is compatible with Schlage®, Medeco®, Best®, Ilco/Lori® & many others. Cylinder not included.

ALUMINUM "KiK"s

- Aircraft Grade Aluminum Body
- 1-13/16" Body Width
- 1-3/16" Tall Hardened Steel Shackle Standard
- 3/4" & 1-1/2" Hardened Steel Shackle Heights Available on "KiK-1A" Series
- 2" & 3" Hardened Steel Shackle Heights Available on All Series
- Stainless Steel Shackles Available
- Mil Spec Type II Anodized
- Ten Anodized Colors Available
- "Your Logo, Your Locks"[™] Engraving Available



"KiK-1A" SERIES

- 1/4" Shackle Diameter



"KiK-2A" SERIES

- 5/16" Shackle Diameter



"KiK-3A" SERIES

- 3/8" Shackle Diameter

BRASS "KiK"s

- Solid Brass Body
- Shared 1-13/16" Body Width
- 1-3/16" Tall Hardened Steel Shackle Standard
- 3/4" & 1-1/2" Hardened Steel Shackle Heights Available on "KiK-1B" Series
- 2" & 3" Hardened Steel Shackle Heights Available on All Series
- Stainless Steel Shackles Available
- Electroless Nickel Plating
- "Your Logo, Your Locks"[™] Engraving available



"KiK-1B" SERIES

- 1/4" Shackle Diameter



"KiK-2B" SERIES

- 5/16" Shackle Diameter



"KiK-3B" SERIES

- 3/8" Shackle Diameter

**PACLOCK IS THE ONLY COMPANY
IN THE WORLD THAT ACCEPTS A
KEY-IN-KNOB CYLINDER IN THIS
PADLOCK TYPE!**



"KiK-900" Series

"KiK-900"

- Hardened Solid Steel Body
- 2-1/2" Body Width
- 7/16" Shackle Diameter
- 1-3/16" Tall Hardened Steel Shackle Standard
- 2" & 3" Hardened Steel Shackle Heights Available
- Electroless Nickel Plating
- "Your Logo, Your Locks"[™] Engraving Available on Black Powder Coated Hardened Steel Lock



"KiK-1A", "KiK-2A", "KiK-3A" Series available in ten standard colors. Custom colors available.

* Cylinders not included

KiK SERIES - SHACKLELESS

KEY-IN-KNOB CYLINDER



PACLOCK's "KiK" (Key-In-Knob) Series of shackleless padlocks offer never before seen versatility and breadth of scope. Our patented "KiK-400", "KiK-2170A", "KiK-2170" and "KiK-2171" Series provide extreme security in a shackleless hockey-puck format that work with your KiK cylinders.

The "KiK-400", "KiK-2170" and "KiK-2171" are made from hardened steel that is nickel plated for protection against harsh elements and the "KiK-2170A" is Aircraft Grade aluminum that is then anodized and available in 10 colors. Cylinders not included.

All of the solid padlock bodies featured in this catalog are designed, precision CNC'd, assembled, quality tested and approved in the USA. The steel locks are heat treated and nickel plated in the USA. The brass locks are nickel plated in the USA. And the aluminum locks are anodized in the USA. Your support of PACLOCK supports a variety of American businesses.



U.S. Patent 8,978,426

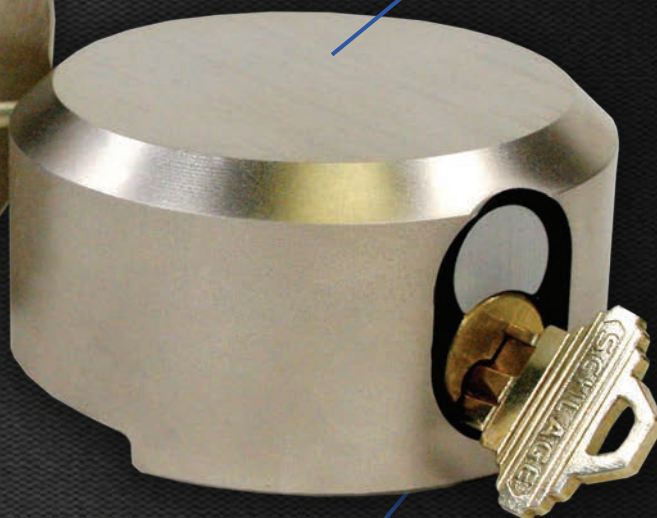
The "KiK-400" has a 1/4" stepped back cutout for use with bar-style hasps. The "KiK-2170", "KiK-2170A" and the "KiK-2171" have a flat back for use with shrouded-style hasps.

Take advantage of "Your Logo, Your Locks"™ program for ultimate customization.



"KiK-400" Series

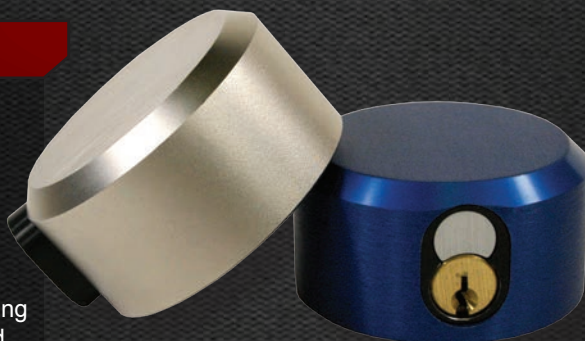
"KiK-400", "KiK-2170" and "KiK-2171" Series available in hardened steel and "KiK-2170A" Series in aluminum and anodized in ten available colors.



Our KiK padlock is compatible with Schlage®, Medeco®, Best®, Ilco/Lori® & many others. Cylinder not included.

"KiK-2170"

- Hardened Solid Steel Body
- 2-7/8" Body Diameter
- Hidden Shackle Design
- Electroless Nickel Plated
- Patented Design
- Flat Back Design Works with Shrouded Hasps
- "Your Logo, Your Locks"™ Engraving Available on Black Powder Coated Hardened Steel Lock



"KiK-2170" Series

"KiK-2170A" Series

"KiK-2170A"

- Aircraft Grade Aluminum Body
- 2-7/8" Body Diameter
- Hidden Shackle Design
- Mil Spec Type II Anodized
- Ten Anodized Colors Available
- Patented Design
- Flat Back Design Works with Shrouded Hasps
- "Your Logo, Your Locks"™ Engraving Available

"KiK-400"

- Hardened Solid Steel Body
- 2-7/8" Body Diameter
- Hidden Shackle Design
- Electroless Nickel Plated
- Patented Design
- Stepped Back Cut-out Design Works with Bar-style Hasps
- "Your Logo, Your Locks"™ Engraving Available on Black Powder Coated Hardened Steel Lock



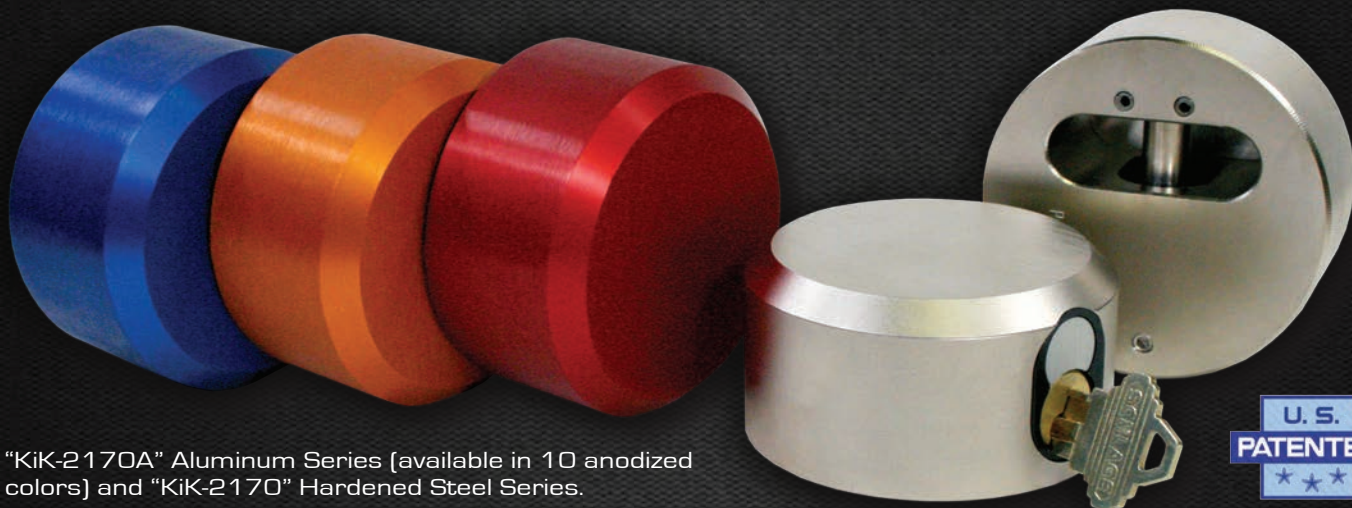
"KiK-400" Series

"KiK-2171"

- Hardened Solid Steel Body
- 2-7/8" Body Diameter
- Hidden Shackle Design
- Electroless Nickel Plated
- Patented Design
- Flat Back Design with 2 Drill Holes Works with Shrouded Hasps
- "Your Logo, Your Locks"™ Engraving Available on Black Powder Coated Hardened Steel Lock



"KiK-2171" Series



"KiK-2170A" Aluminum Series (available in 10 anodized colors) and "KiK-2170" Hardened Steel Series.



U.S. Patent 8,978,426

* Cylinders not included

6-PIN REKEYABLE

SHACKLED



PACLOCK's solid body rekeyable padlock is manufactured from aluminum, brass and solid steel that is hardened. Our rekeyable series padlocks come standard with 6-pin cylinders that can be keyed alike, keyed different and even master keyed!!!

All of PACLOCK's rekeyable padlocks come standard with pick and bump resistant technology.

All of the solid padlock bodies featured in this catalog are designed, precision CNC'd, assembled, quality tested and approved in the USA. The brass locks are nickel plated in the USA. The steel locks are heat treated and nickel plated in the USA. And the aluminum locks are anodized in the USA. Your support of PACLOCK supports a variety of American businesses.

Rekeyable product line has a wide variety of shackle heights and diameters available.

"900A" Aluminum Series

Restricted keyways available.

PACLOCK's rekeyable padlocks come standard with 6-pin cylinders.

Take advantage of "Your Logo, Your Locks"™ program for ultimate customization!

Solid hardened steel body or aluminum body (available in ten anodized colors).

Can be changed to key retaining for enhanced security.

Choose to key your locks differently or alike. PACLOCK even offers Master Keyed and Grandmaster Keying options.



"900A" SERIES

- Aircraft Grade Aluminum Body
- Mil Spec Type II Anodized
- 2-1/2" Body Width
- 7/16" Shackle Diameter
- 1-3/16" Tall Hardened Steel Shackle Standard
- 2" & 3" Hardened Steel Shackle Heights Available
- Ten Anodized Colors Available
- "Your Logo, Your Locks"™ Engraving Available



"900A" Series

"900" Series

"900" SERIES

- Solid Hardened Steel Body
- Electroless Nickel Plating
- 2-1/2" Body Width
- 7/16" Shackle Diameter
- 1-3/16" Tall Hardened Steel Shackle Standard
- 2" & 3" Hardened Steel Shackle Heights Available
- "Your Logo, Your Locks"™ Engraving Available on Black Powder Coated Hardened Steel Lock



"90A" Series



"150" Series



"200" Series

REKEYABLE ALUMINUM

"90A" SERIES

- 1-1/2" Body Width
- 1/4" Shackle Diameter

"100A" SERIES

- 1-3/4" Body Width
- 5/16" Shackle Diameter

"200A" SERIES

- 2" Body Width
- 3/8" Shackle Diameter

SHARED FEATURES

- Aircraft Grade Aluminum
- Mil Spec Type II Anodized
- 1-3/16" Tall Hardened Steel Shackle Standard
- 3/4" & 1-1/2" Hardened Steel Shackle Heights Available on "90A" Series
- 2" & 3" Hardened Steel Shackle Heights Available on All Series
- 1-3/16", 2" and 3" Stainless Steel Shackle Heights Available
- Ten Anodized Colors Available
- Available as KD, KA, MK, or GMK
- "Your Logo, Your Locks"™ Engraving Available

REKEYABLE BRASS

"95" SERIES

- 1-1/2" Body Width
- 1/4" Shackle Diameter

"150" SERIES

- 1-3/4" Body Width
- 5/16" Shackle Diameter

"250" SERIES

- 2" Body Width
- 3/8" Shackle Diameter

SHARED FEATURES

- Solid Brass Body
- Electroless Nickel Plating
- 1-3/16" Tall Hardened Steel Shackle Standard
- 3/4" & 1-1/2" Hardened Steel Shackle Heights Available on "95" Series
- 2" & 3" Hardened Steel Shackle Heights Available on All Series
- 1-3/16", 2" and 3" Stainless Steel Shackle Lengths Available
- Available as KD, KA, MK, or GMK
- "Your Logo, Your Locks"™ Engraving Available

REKEYABLE STEEL

"90" SERIES

- 1-1/2" Body Width
- 1/4" Shackle Diameter

"100" SERIES

- 1-3/4" Body Width
- 5/16" Shackle Diameter

"200" SERIES

- 2" Body Width
- 3/8" Shackle Diameter

SHARED FEATURES

- Hardened Steel Body
- Electroless Nickel Plating
- 1-3/16" Tall Hardened Steel Shackle Standard
- 3/4" & 1-1/2" Hardened Steel Shackle Heights Available on "90" Series
- 2" & 3" Hardened Steel Shackle Heights Available on All Series
- 1-3/16", 2" and 3" Stainless Steel Shackle Lengths Available
- Available as KD, KA, MK, or GMK
- "Your Logo, Your Locks"™ Engraving Available on Black Powder Coated Hardened Steel Lock



"900A" Aluminum Series (available in ten anodized colors) and "900" Hardened Steel Series

6-PIN REKEYABLE

SHACKLELESS



PACLOCK's shackleless hockey-puck padlock is the locking mechanism of the future. With its hidden shackle design and only one moving part, PACLOCK's hockey-puck lock lacks the environmental vulnerabilities that traditional, shackled padlocks have. Even after years of exposure to the elements, this lock will still function.

All of the solid padlock bodies featured in this catalog are designed, precision CNC'd, assembled, quality tested and approved in the USA. The steel locks are heat treated and nickel plated in the USA. The brass locks are nickel plated in the USA. And the aluminum locks are anodized in the USA. Your support of PACLOCK supports a variety of American businesses.



"2170A" Series

"400", "2170" and "2171" Series available in hardened steel bodies. The "2170A" Series available in aluminum in ten anodized colors.

The "400" Series has a stepped back cut-out for bar-style hasps. The "2170", "2170A" and "2171" Series have a flat back for shrouded hasps.

Take advantage of the "Your Logo, Your Locks"™ program for ultimate customization.



"400" Hardened Steel Series

Choose to key your locks differently or alike. PACLOCK even offers Master Keyed and Grandmaster Keying options.

"400A"

- Aircraft Grade Aluminum Body
- 2-7/8" Body Diameter
- Mil Spec Type II Anodized
- Ten Anodized Colors Available
- Hidden Shackle
- 1/4" Stepped Back for Bar-Style Hasps
- "Your Logo, Your Locks"[™] Engraving Available



"400A" Series

"400"

- Hardened Steel Body
- 2-7/8" Body Diameter
- Electroless Nickel Plating
- Hidden Shackle
- 1/4" Stepped Back for Bar-Style Hasps
- "Your Logo, Your Locks"[™] Engraving Available on Black Powder Coated Hardened Steel Lock



"400" Series

"2170A"

- Aircraft Grade Aluminum Body
- 2-7/8" Body Diameter
- Mil Spec Type II Anodized
- Ten Anodized Colors Available
- Hidden Shackle
- Flatback for Shrouded-Style Hasps
- "Your Logo, Your Locks"[™] Engraving Available



"2170A" Series

"2170"

- Hardened Steel Body
- 2-7/8" Body Diameter
- Electroless Nickel Plating
- Hidden Shackle
- Flatback for Shrouded-Style Hasps
- "Your Logo, Your Locks"[™] Engraving Available on Black Powder Coated Hardened Steel Lock



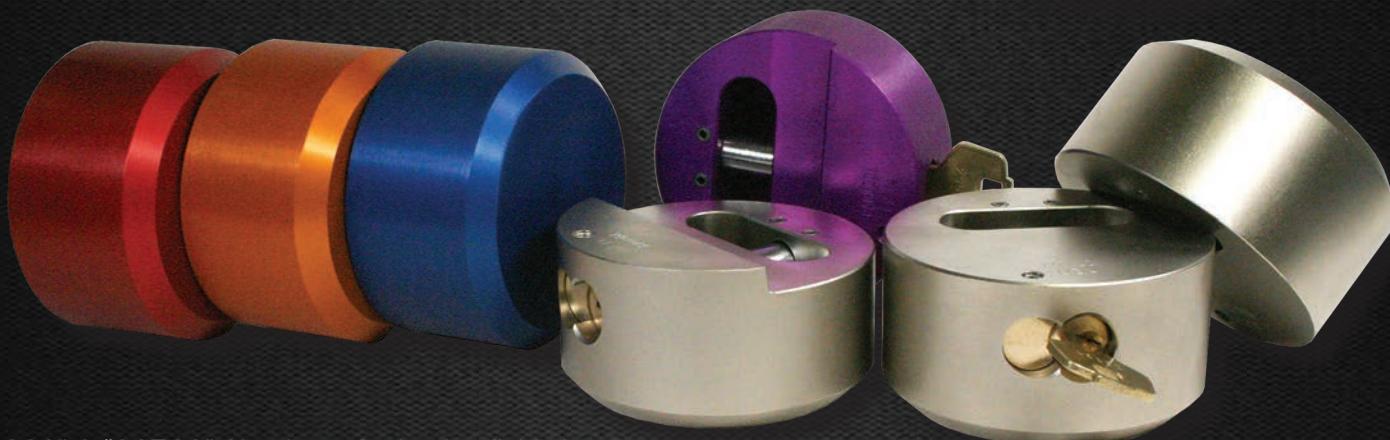
"2170" Series

"2171"

- Hardened Steel Body
- 2-7/8" Body Diameter
- Electroless Nickel Plating
- Hidden Shackle
- Flat Back Design with 2 Drill Holes Works with Shrouded Hasps
- "Your Logo, Your Locks"[™] Engraving Available on Black Powder Coated Hardened Steel Lock



"2171" Series



"400A" & "2170A" Aluminum Series [available in ten anodized colors] and "400" & "2170" Hardened Steel Series

LFIC SERIES

LARGE FORMAT INTERCHANGEABLE CORE



PACLOCK's solid body, Large Format Interchangeable Core (LFIC) padlocks are designed to work with several of the leading LFIC cylinders from Yale®, Medeco® and ASSA®.

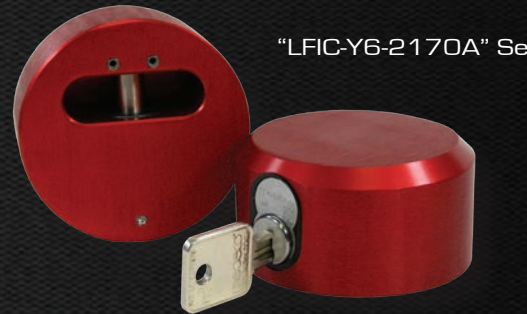
Our "LFIC-Y6-B" Series is a solid brass body, large format interchangeable core rectangular padlock that accepts 6-pin large format Yale® and Medeco® Series 31 cylinders (not included). The "LFIC-Y6-B" Series is available in 3 different shackle diameters and lengths to suit your security needs.

Our LFIC Hockey-Puck Series have a patented sleeve designed to work with several of the leading LFIC cylinders from Yale®, Medeco® and ASSA®.

All of the solid padlock bodies featured in this catalog are designed, precision CNC'd, assembled, quality tested and approved in the USA. The brass locks are nickel plated in the USA. The steel locks are heat treated and nickel plated in the USA. And the aluminum locks are anodized in the USA. Your support of PACLOCK supports a variety of American businesses.



"LFIC-Y6-B" Series



"LFIC-Y6-2170A" Series



"LFIC-ASSA-2171" Series

LFIC RECTANGULAR BRASS BODY

SHARED FEATURES

- Solid Brass Body
- Electroless Nickel Plating
- Compatible with 6-pin Yale® or Medeco® M31 Series cylinders (not included)
- 1-3/16" Tall Hardened Steel Shackle Standard
- 3/4" & 1-1/2" Hardened Steel Shackles Available on "LFIC-Y6-1B" Series
- 2" & 3" Hardened Steel Shackle Heights Available
- 1-3/16", 2", & 3" Stainless Steel Shackles Available
- Cylinder not included
- "Your Logo, Your Locks"™ Engraving Available



LFIC-Y6-1B

- 1-13/16" Body Width
- 1/4" Shackle Diameter



LFIC-Y6-2B

- 1-13/16" Body Width
- 5/16" Shackle Diameter



LFIC-Y6-3B

- 1-13/16" Body Width
- 3/8" Shackle Diameter



medeco



"LFIC-Y6-400" Series

"LFIC-Y6" HOCKEY-PUCKS

"LFIC-Y6-400" SERIES

- Hardened Solid Steel Body
- Electroless Nickel Plated
- 1/4" Stepped Back for Bar-Style Hasps

"LFIC-Y6-2170" SERIES

- Hardened Solid Steel Body
- Electroless Nickel Plated
- Flat Back Design Works with Shrouded Hasps

"LFIC-Y6-2170A" SERIES

- Aircraft Grade Aluminum Body
- Mil Spec Type II Anodized
- Ten Anodized Colors Available
- Flat Back Design Works with Shrouded Hasps

"LFIC-Y6-2171" SERIES

- Hardened Solid Steel Body
- Electroless Nickel Plated
- Flat Back Design with 2 Drill Holes Works with Shrouded Hasps

SHARED FEATURES

- Patented Design Compatible with LFIC Yale® and Medeco® M31 Cylinders (cylinders not included)
- 2-7/8" Body Diameter
- Hidden Shackle Design
- "Your Logo, Your Locks"™ Engraving Available on Aluminum or Black Powder Coated Hardened Steel

medeco



"LFIC-M32-2170A" Series

"LFIC-M32" HOCKEY-PUCKS

"LFIC-M32-400" SERIES

- Hardened Solid Steel Body
- Electroless Nickel Plated
- 1/4" Stepped Back for Bar-Style Hasps

"LFIC-M32-2170" SERIES

- Hardened Solid Steel Body
- Electroless Nickel Plated
- Flat Back Design Works with Shrouded Hasps

"LFIC-M32-2170A" SERIES

- Aircraft Grade Aluminum Body
- Mil Spec Type II Anodized
- Ten Anodized Colors Available
- Flat Back Design Works with Shrouded Hasps

"LFIC-M32-2171" SERIES

- Hardened Solid Steel Body
- Electroless Nickel Plated
- Flat Back Design with 2 Drill Holes Works with Shrouded Hasps

SHARED FEATURES

- Patented Design Compatible with Medeco® M32 Cylinders (cylinders not included)
- 2-7/8" Body Diameter
- Hidden Shackle Design
- "Your Logo, Your Locks"™ Engraving Available on Aluminum or Black Powder Coated Hardened Steel



U.S. Patent 8,776,557

ASSA®

ASSA ABLOY



"LFIC-ASSA-2171" Series

"LFIC-ASSA" HOCKEY-PUCKS

"LFIC-ASSA-400" SERIES

- Hardened Solid Steel Body
- Electroless Nickel Plated
- 1/4" Stepped Back for Bar-Style Hasps

"LFIC-ASSA-2170" SERIES

- Hardened Solid Steel Body
- Electroless Nickel Plated
- Flat Back Design Works with Shrouded Hasps

"LFIC-ASSA-2170A" SERIES

- Aircraft Grade Aluminum Body
- Mil Spec Type II Anodized
- Ten Anodized Colors Available
- Flat Back Design Works with Shrouded Hasps

"LFIC-ASSA-2171" SERIES

- Hardened Solid Steel Body
- Electroless Nickel Plated
- Flat Back Design with 2 Drill Holes Works with Shrouded Hasps

SHARED FEATURES

- Patented Design Compatible with ASSA® LFIC Cylinders (cylinders not included)
- 2-7/8" Body Diameter
- Hidden Shackle Design
- "Your Logo, Your Locks"™ Engraving Available on Aluminum or Black Powder Coated Hardened Steel

* Cores not included

FSIC SERIES - SHACKLELESS

FULL SIZE SCHLAGE® INTERCHANGEABLE CORE



PACLOCK's patented Full Size Format Interchangeable Core (FSIC) padlocks are designed to work with a Schlage® IC cylinder (cylinder not included) in a hockey-puck body.

Our "FSIC-400", "FSIC-2170", and "FSIC-2171" Series hockey-pucks are made from hardened steel which is then nickel plated for added durability and to protect against rust.

The "FSIC-2170A" Series is made from aircraft grade aluminum which is then anodized in one of ten available colors.

All of the solid padlock bodies featured in this catalog are designed, precision CNC'd, assembled, quality tested and approved in the USA. The brass locks are nickel plated in the USA. The steel locks are heat treated and nickel plated in the USA. And the aluminum locks are anodized in the USA. Your support of PACLOCK supports a variety of American businesses.



"FSIC-2170" Series



U.S. Patent 8,776,557

The "FSIC-2170", "FSIC-2170A" and "FSIC-2171" Series have a flat back for shrouded hasps. The "FSIC-400" Series has a stepped back cut-out for bar-style hasps.

"FSIC-400", "FSIC-2170" and "FSIC-2171" Series available in hardened steel and the "FSIC-2170A" Series available in aluminum anodized in one of ten available colors.

Take advantage of the "Your Logo, Your Locks"™ program for ultimate customization.



"FSIC-2170A" Series

Our FSIC Series padlock is compatible with Schlage®'s IC cylinder (core not included).

"FSIC-400"

- 2-7/8" Body Diameter
- Hidden Shackle Design
- Hardened Solid Steel Body
- Electroless Nickel Plated
- Patented Design Works With Schlage® IC Cylinder (not included)
- Stepped Back Cut-out Works with Bar-style Hasps
- "Your Logo, Your Locks"™ Engraving Available on Black Powder Coated Hardened Steel Lock

"FSIC-400" Series



U.S. Patent 8,776,557

"FSIC-2170"

- 2-7/8" Body Diameter
- Hidden Shackle Design
- Hardened Solid Steel Body
- Electroless Nickel Plated
- Patented Design Works With Schlage® IC Cylinder (not included)
- Flat Back Works with Shrouded Hasps
- "Your Logo, Your Locks"™ Engraving Available on Black Powder Coated Hardened Steel Lock

"FSIC-2170" Series



"FSIC-2170A" Series

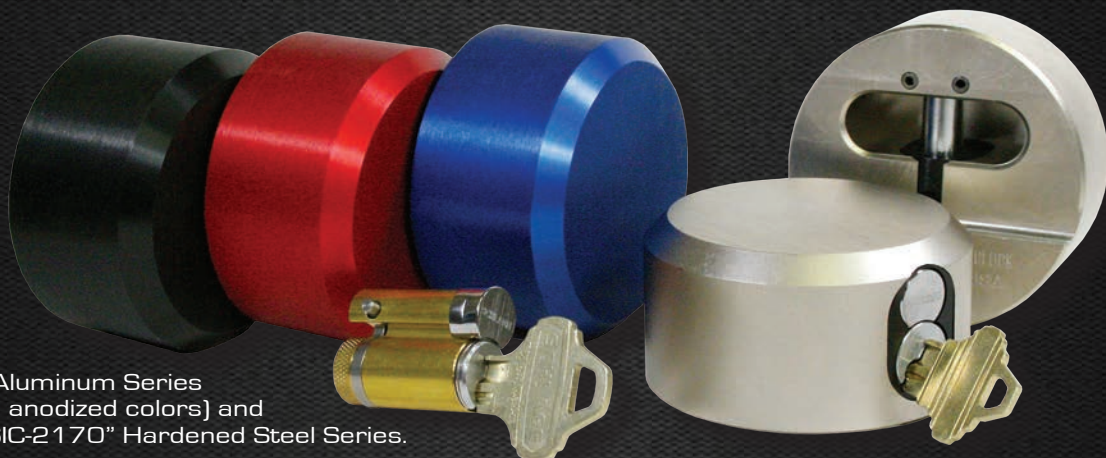
"FSIC-2170A"

- 2-7/8" Body Diameter
- Hidden Shackle Design
- Aircraft Grade Aluminum Body
- Mil Spec Type II Anodized
- Ten Anodized Colors Available
- Patented Design Works With Schlage® IC Cylinder (not included)
- Flat Back Works with Shrouded Hasps
- "Your Logo, Your Locks"™ Engraving Available

"FSIC-2171"

- 2-7/8" Body Diameter
- Hidden Shackle Design
- Hardened Solid Steel Body
- Electroless Nickel Plated
- Patented Design Works With Schlage® IC Cylinder (not included)
- Flat Back Design with 2 Drill Holes Works with Shrouded Hasps
- "Your Logo, Your Locks"™ Engraving Available on Black Powder Coated Hardened Steel Lock

"FSIC-2171" Series



"FSIC-2170A" Aluminum Series
(available in ten anodized colors) and
"FSIC-400", "FSIC-2170" Hardened Steel Series.

* Cores not included

UNIQUE SOLUTIONS



PAC-LINK System

CHAIN SECURITY SYSTEM

Proving that PACLOCK is leading the charge towards the padlocks of the future, the PAC-LINK system is a patented and innovative way to use a hockey-puck with a chain! Perfect for gate enclosures! Eliminates the vulnerability of using shackled padlocks to chain up an enclosure.

Sold as a kit including the PAC-LINK base, Hockey-Puck (select the hockey-puck style that works for you from the list below), and one meter length of 12mm thick square chain encased in black Pacific Lock nylon sleeve. Cores/cylinders not included.

Choose a hockey-puck style from the list below:

- 2180
- 2180-IC2
- KiK-2180
- FSIC-2180
- LFIC-2180



PAC-LINK with 2180-IC2



U.S. Patent 7,543,466

* Core not included



PAC-KEEPER BOX

SECURITY CABINET

Two cabinet styles available. One locks with a padlock, the other an IC Core cabinet lock (locks not included). 14 gauge steel Security Lock Box ensures that optimal key control is maintained by preventing unauthorized access to the PAC-KEEPER key control unit.

Box is 9.5" x 9.5" and gray powder coated. Security box is designed to hold one, two, or three PAC-KEEPERS.



PAC-KEEPER

MECHANICAL KEY CONTROL SYSTEM

PAC-KEEPER - SFIC & KiK

The PAC-KEEPER is physical key control at its best! Made in the USA from stainless steel and brass, this innovative product will protect your most important keys by insuring that the key is either returned or that you have proof of whom it was that left the premises with your key. In order to remove the trapped key, the user must insert his operator key ~ the roles reverse and the operator key now becomes the trapped key! The PAC-KEEPER is available for either SFIC cores or KiK cylinders compatibility. Cores/cylinders not included.

PAC-KEEPER SFIC

- Accepts all small format interchangeable cores (SFIC) from Medeco®, Best® and many others.
- Unique raised shoulder design prevents the trapped key head from being broken off by malicious users.

PAC-KEEPER KiK

- Accepts all key-in-knob (KiK) cylinders.
- Unique raised shoulder design prevents the trapped key head from being broken off by malicious users.



How It Works



STEP 1

"Controlled Key" is trapped and cannot be removed.



STEP 2

Insert "User Key" and rotate it parallel to the "Controlled Key." This unlocks the ball bearing and allows the body to slide sideways.



STEP 3

Expose the "Controlled Key" by sliding the body.



STEP 4

Now remove the "Controlled Key" and your "User Key" becomes the trapped key! In order to reclaim the user key, reverse the process and re-trap the "Controlled Key."

The PAC-KEEPER-KiK model is shown above.
The PAC-KEEPER-SFIC model works the same way.

* Cores/cylinders not included

HASPS

DOOR SECURITY SYSTEM



PL770 HASP

The "PL770" is made from 1/4" thick steel and then zinc plated for weather resistance.

The "PL770" works with all 2-7/8" diameter hockey- pucks. These are used for many high security applications.

Backplates are available for added stability.



PL780 HASP

The "PL780" is made from 1/4" thick steel and then zinc plated for weather resistance. The PL780 has a shielded right side.

The "PL780" works with all 2-7/8" diameter hockey-pucks. These are used for many high security applications.

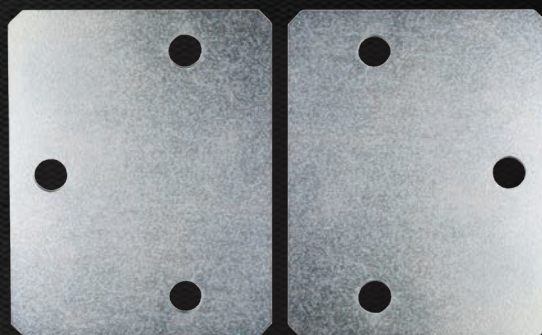
Backplates are available for added stability.



BACKPLATES FOR PL770/PL780

For added stability, pair our high security PL770 or PL780 hasp with a set of backplates made from 1/4" thick zinc-plated steel for weather resistance.

Use these backplates to strengthen the opposite side of the door which the hasp is mounted to.

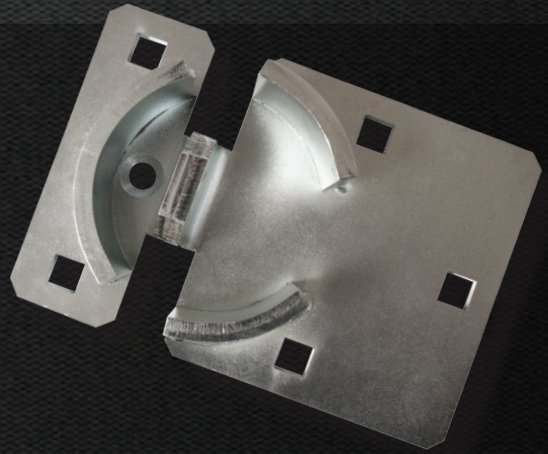


PL775 HASP

The "PL775" is made from 1/4" thick steel and then zinc plated for weather resistance. The "PL775" has one short side.

The "PL775" works with all 2-7/8" diameter hockey-pucks. These are used for many high security applications.

Backplates are available for added stability.



PL785 HASP

The "PL785" is made from 1/4" thick steel and then zinc plated for weather resistance. The "PL785" has one short side and one shielded side.

The "PL785" works with all 2-7/8" diameter hockey-pucks. These are used for many high security applications.

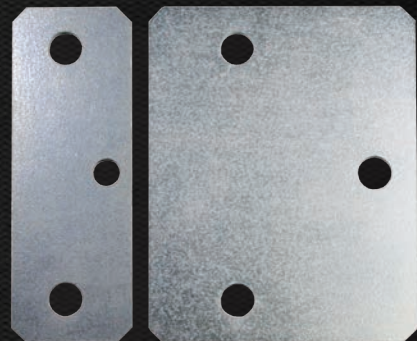
Backplates are available for added stability.



BACKPLATES FOR PL775/PL785

For added stability, pair our high security PL775 or PL785 hasp with a set of backplates made from 1/4" thick zinc-plated steel for weather resistance.

Use these backplates to strengthen the opposite side of the door which the hasp is mounted to.



SAFETY LOCKOUT



"90A" Series

Pacific Lock manufactures anodized aluminum padlocks that will help meet your facility's OSHA LO/TO requirements. One critical factor for your success is using a variety of colors. When purchasing, make certain that your safety locks are uniquely color coded throughout your facility. With PACLOCK, not only do we offer ten standard colors, but we can manufacture custom, multi-color options. No other manufacturer will offer this as an option.

OSHA also highly recommends 'one employee, one key'. In other words, if Employee 'Bob' de-energizes a piece of equipment with "his" padlock, then only Bob has the key to remove and re-energize that piece of equipment. In the "padlock world," this is called "keyed different."

Another possible need could be for groups of keyed alike locks. Whatever your needs might be, you can count on PACLOCK to offer you the solution. Our key number tracking service can help you manage your OSHA LO/TO requirements.

"90A SERIES"

- Aircraft Grade Aluminum
- Mil Spec Type II Anodized
- 1-1/2" Body Width
- 1/4" Shackle Diameter
- 1-3/16" Tall Hardened Steel Shackle Standard
- 3/4", 1-1/2", 2" & 3" Hardened Steel Shackle Heights Available
- 1-3/16", 2" & 3" Stainless Steel Shackle Heights Available
- Ten Anodized Colors Available
- "Your Logo, Your Locks"TM Engraving Available

"100A SERIES"

- Aircraft Grade Aluminum
- Mil Spec Type II Anodized
- 1-3/4" Body Width
- 5/16" Shackle Diameter
- 1-3/16" Tall Hardened Steel Shackle Standard
- 2" & 3" Hardened Steel Shackle Heights Available
- 1-3/16", 2" & 3" Stainless Steel Shackle Heights Available
- Ten Anodized Colors Available
- "Your Logo, Your Locks"TM Engraving Available

LOCKOUT HASPS

These hasps allow lockout by multiple workers at each lockout point. The hasps are attached to an energy disconnect switch that makes equipment inoperable while repairs are being made.

Safety Lockout Hasps come in two versions:

Safety Lockout-1 (1" diameter)

Safety Lockout-2 (1-1/2" diameter)



Safety Lockout-1

Safety Lockout-2

“YOUR LOGO, YOUR LOCKS”™

PROGRAM

PACLOCK can laser engrave your aluminum, brass, or hardened steel padlocks. Our laser engraving is for customers who want to engrave small to large orders with shorter lead times. Unlike other manufacturers, we will work with you like a human to help you build what you'd like. We don't require .tif's or .pcx's... we don't limit you to “areas”... we don't require a minimum of 48 pieces. No one else does custom engraving like PACLOCK.

For larger production runs, or if you simply want your logo hard-stamped into the lock, PACLOCK offers a stamp die service that hard stamps the lock body. Contact us for details.



- We CAN put your logo on the front of the locks. We don't put our logo on the front of “your” padlocks. This leaves the most valuable real estate for your use.
- You CAN put your customer's logo on the front of the locks with your “Call for Service” information on the back.
- We are comfortable producing as few as six locks with one logo.
- We are the ONLY company that will engrave on hardened steel padlocks.
- We CAN engrave consecutive serial numbers on the sides of locks.
- You CAN add your web address or contact information.
- We CAN produce what YOU can create.

Just call us and let us know how we can help you design “your” padlocks.

LOGO ENGRAVING

PACLOCK can engrave on hardened steel (black powder coated), brass, and aluminum. Each material calls for a unique engraving style:

- Aluminum logos and type are solid engraving
- Brass logos and type are outlined
- Hardened steel logos and type are outlined with a white paint fill on black powder coated steel



Powder Coated
Hardened Steel

Nickel
Plated
Brass

Anodized
Aluminum

Actual lock engravings

TRUCKER LOCK SERIES



PACLOCK's Trucker Lock Series of products are designed for maximum security. These products generally require a secondary fixed mounting hasp or arm in order to support the locking solution. Installation requirements are minimal for the added security benefits of our PACLOCK Trucker Series locks. All of our Trucker Locks come with the PAC-BAND, a highly durable silicon band which protects the key port from dirt, debris and harsh weather.

All of the solid padlock bodies featured in this catalog are designed, precision CNC'd, assembled, quality tested and approved in the USA. The steel locks are heat treated and nickel plated in the USA. And the aluminum locks are anodized in the USA. Your support of PACLOCK supports a variety of American businesses.

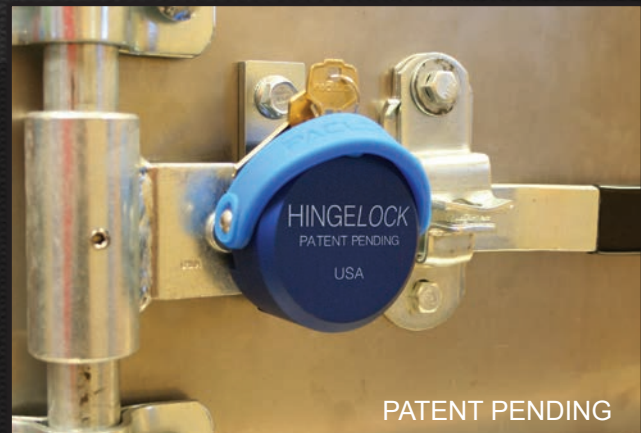
HASPLOCK

- Portable, high security for swing style doors.
- Hidden shackle design is impervious to bolt cutter attack.
- Aircraft grade aluminum body CNC'd in USA to exact standards.
- Limits cut attacks of the hasp arm and parts.
- Multiple keying options.
- PAC-BAND All Weather Protection band included.



HINGELOCK

- Designed for swing style doors.
- Hidden shackle design is impervious to bolt cutter attack.
- Only design on the market to protect the arm, the hinge, and the hinge pin from attack in such a small package.
- Aircraft grade aluminum body machined in USA to exact standards.
- Limits cut attacks of the hasp arm and parts.
- Multiple keying options available.
- PAC-BAND All Weather Protection band included.



HOOKLOCK

- High security for roll-up style doors.
- Only design on the market to definitively protect the locking hook from disengaging.
- Hidden shackle design is impervious to bolt cutter attack.
- Aircraft grade aluminum body CNC'd in USA to exact standards.
- Limits cut attacks of the door handle arm and parts.
- Multiple keying options available.
- PAC-BAND All Weather Protection band included.



PATENT PENDING

HASPLOCK PRO

- Portable, high security for swing style doors.
- Hidden shackle design is impervious to bolt cutter attack.
- Solid extruded steel, machined, hardened, and then plated in the USA to exact standards.
- Limits cut attacks of the hasp arm and parts
- Multiple keying options available.
- PAC-BAND All Weather Protection band included.



PATENT PENDING

HINGELOCK PRO

- Designed for swing style doors.
- Hidden shackle design is impervious to bolt cutter attack.
- Solid extruded steel, machined, hardened, and then plated in the USA to exact standards.
- Only design on the market to protect the arm, the hinge, and the hinge pin from attack in such a small package.
- Limits cut attacks of the hasp arm and parts.
- Multiple keying options available.
- PAC-BAND All Weather Protection band included.



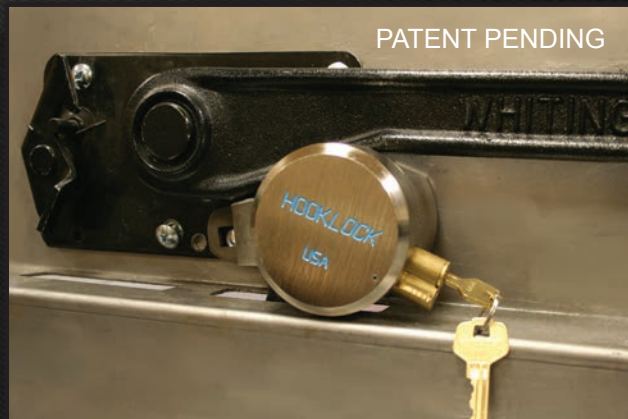
PATENT PENDING

TRUCKER LOCK SERIES



HOOKLOCK PRO

- High security for roll-up style doors.
- Hidden shackle design is impervious to bolt cutter attack.
- Only design on the market to definitively protect the locking hook from disengaging.
- Solid extruded steel, machined, hardened, and plated in the USA to exact standards.
- Extremely high security locking solution that does not interfere with installing a security seal.
- Multiple keying options available.
- PAC-BAND All Weather Protection band included.



DECKLOCK

- Portable, high security for roll-up style doors.
- Designs for both TODCO & WHITING roll-up doors.
- Body made from solid extruded steel, machined, and then plated in the USA to exact standards.
- Entire assembly black zinc plated in the USA for superior rust protection.
- Requires no installation of any hasp arm and parts.
- PAC-BAND All Weather Protection band included.



LANYARD

- 1/8" thick cable secures your lock to any structure, preventing accidental loss.
- 12" length allows attachment to multiple locations on truck doors.
- Removable for storage and transportation.



PAC-BAND

- Durable Silicone protects the key access port from dirt and debris.
- All weather design is capable of withstanding all types of severe weather.
- All Trucker Locks include the "PAC-BAND".
- Can be used with all Trucker Series locks.



MILITARY GRADE

PACLOCK has been a supplier to the United States military and other government organizations for more than thirteen years. Our government locks are US Made End Products.

All of our government padlocks are designed to be in compliance with the government standards CID-A-A-59486 and CID-A-A-59487.

For a complete listing of NSN's that PACLOCK offers, visit our web site at: www.paclock.com/government-locks.html or scan this QR code:



Extended shackle available.

Dual ball bearings and solid actuator prevent shimming and offer superior pull resistance.

Brass body resists corrosion.

Enhanced physical security with a key retaining feature.



"95G" BRASS LOCK

- Hybrid Solid & Laminated Brass Body
- 3/4" Standard Shackle Length
- 1/4" Diameter Brass Shackle
- 2-5/8" Shackle Available
- 1-1/2" Body Width
- Solid Actuator
- Key Retained
- Available with 9" Chain
- 5-pin M15 Cylinder with Pick and Bump Resistance Technology
- Available as KD, KA, MK, or GMK

"100G" STEEL LOCK

- 1-3/4" Laminated Steel Body
- 1-3/16" Tall Shackle Standard
- 5/16" Diameter Hardened Steel Shackle
- 3" Shackle Height Available
- Zinc Plated
- Solid Actuator
- Key Retained
- 5-pin M15 Cylinder with Pick and Bump Resistance Technology
- Available with 9" Chain
- Available as KD, KA, MK, or GMK



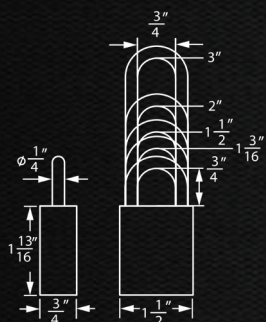
"100GL" STEEL LOCK

- 1-3/4" Solid Steel Body
- 1-1/8" Tall Shackle Standard
- 5/16" Diameter Hardened Steel Shackle
- 3" Shackle Height Available
- Zinc Plated
- Solid Actuator
- Key Retained
- 6-pin P0 Cylinder with Pick and Bump Resistance Technology
- Available with 9" Chain
- Available as KD, KA, MK, or GMK

TECHNICAL DATA

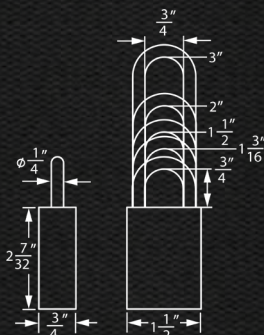
SHACKLED

90/90A/95



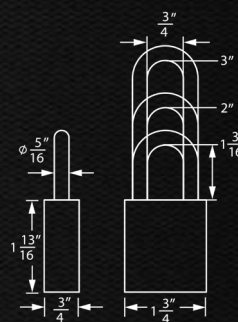
SHACKLE LENGTHS: $\frac{3}{4}$ ", 1", 1-1/2", 2", 3"
SHACKLE DIAMETER: $\frac{1}{4}$ "

90-IC/90A-IC/95-IC



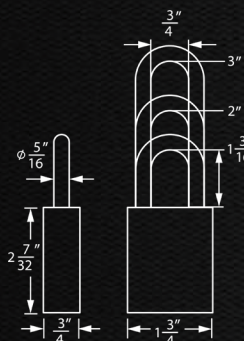
SHACKLE LENGTHS: $\frac{3}{4}$ ", 1", 1-1/2", 2", 3"
SHACKLE DIAMETER: $\frac{1}{4}$ "

100/100A/150



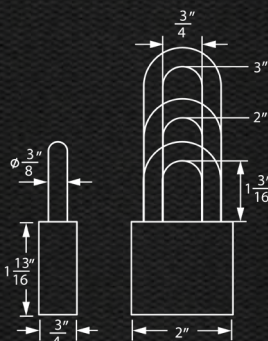
SHACKLE LENGTHS: 1", 2", 3"
SHACKLE DIAMETER: $\frac{5}{16}$ "

100-IC/100A-IC/150-IC



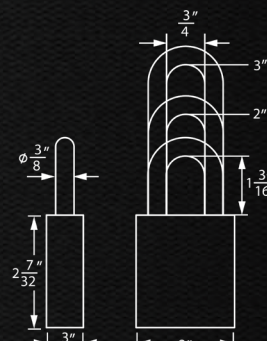
SHACKLE LENGTHS: 1", 2", 3"
SHACKLE DIAMETER: $\frac{5}{16}$ "

200/200A/250



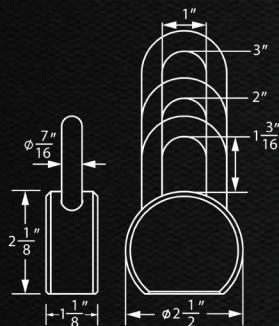
SHACKLE LENGTHS: 1", 2", 3"
SHACKLE DIAMETER: $\frac{3}{8}$ "

200-IC/200A-IC/250-IC



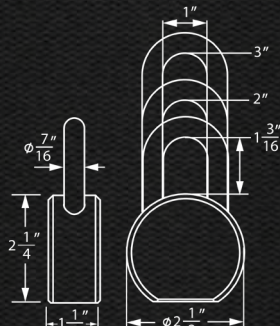
SHACKLE LENGTHS: 1", 2", 3"
SHACKLE DIAMETER: $\frac{3}{8}$ "

900/900A



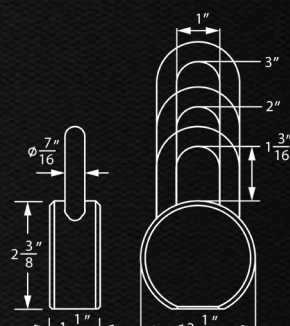
SHACKLE LENGTHS: 1", 2", 3"
SHACKLE DIAMETER: $\frac{7}{16}$ "

900-IC



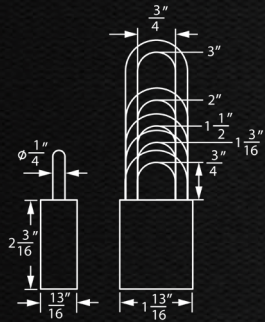
SHACKLE LENGTHS: 1", 2", 3"
SHACKLE DIAMETER: $\frac{7}{16}$ "

KIK-900



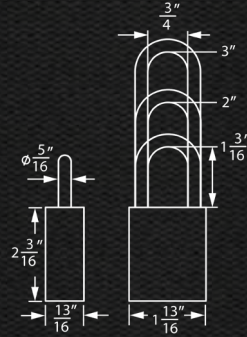
SHACKLE LENGTHS: 1", 2", 3"
SHACKLE DIAMETER: $\frac{7}{16}$ "

KIK-1A/1B



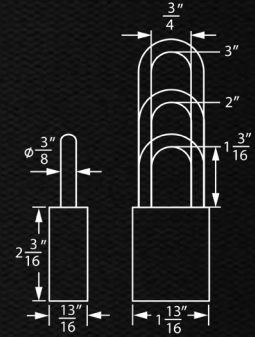
SHACKLE LENGTHS: 3/4", 1", 1-1/2", 2", 3"
SHACKLE DIAMETER: 1/4"

KIK-2A/2B



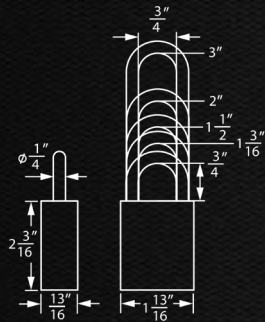
SHACKLE LENGTHS: 1", 2", 3"
SHACKLE DIAMETER: 5/16"

KIK-3A/3B



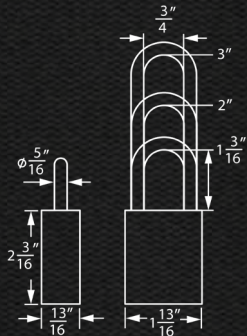
SHACKLE LENGTHS: 1", 2", 3"
SHACKLE DIAMETER: 3/8"

LFIC-Y6-1B



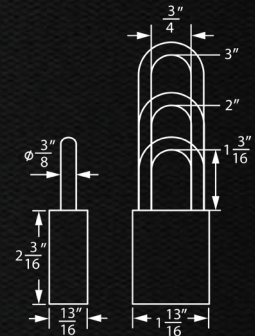
SHACKLE LENGTHS: 3/4", 1", 1-1/2", 2", 3"
SHACKLE DIAMETER: 1/4"

LFIC-Y6-2B



SHACKLE LENGTHS: 1", 2", 3"
SHACKLE DIAMETER: 5/16"

LFIC-Y6-3B



SHACKLE LENGTHS: 1", 2", 3"
SHACKLE DIAMETER: 3/8"

AIRCRAFT GRADE ALUMINUM OR HARDENED STEEL?



ALUMINUM:

PACLOCK's aluminum products are manufactured using Aircraft Grade Aluminum to ensure high quality and product durability. Our aluminum products are lightweight and easy to transport.



All of our aluminum locks can be anodized in one of ten available colors. Custom colors are available on request with volume conditions required.

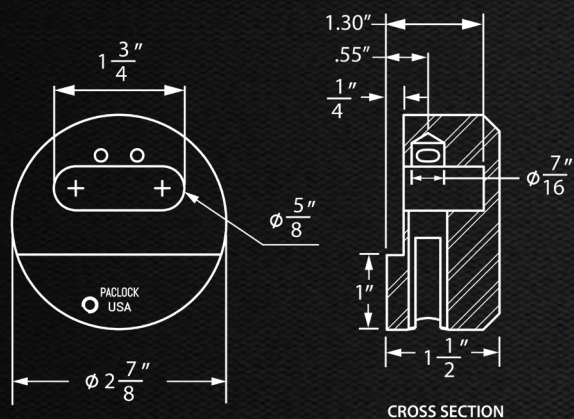
HARDENED STEEL:

PACLOCK's steel products are extruded from solid hardened steel using a CNC machine and then nickel plated to ensure resistance to the elements. Our solid steel design is nearly indestructible and practically impervious to drills and hacksaws.

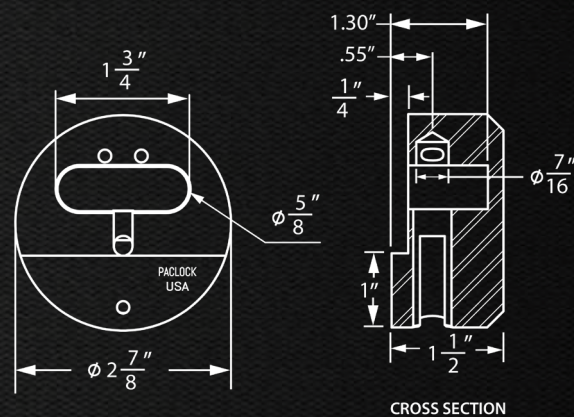
TECHNICAL DATA

SHACKLELESS

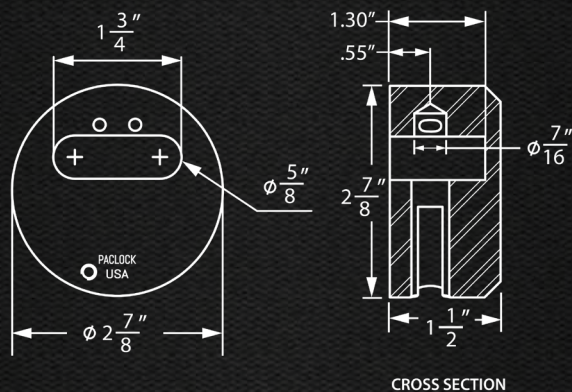
400/400A



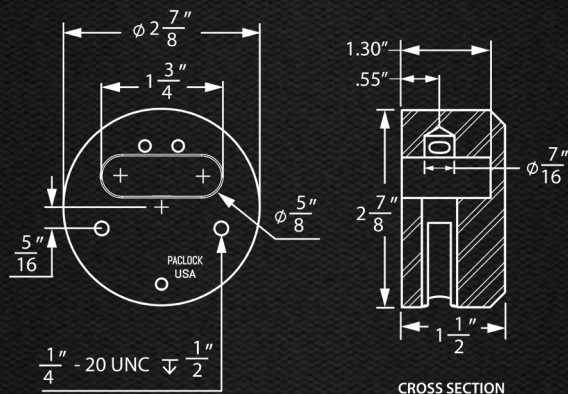
KIK-400/400-IC2/FSIC-400



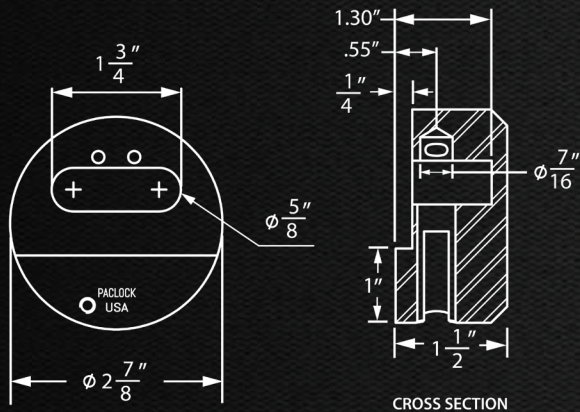
2170/2170A/KIK-2170/KIK-2170A/2170-IC2/2170A-IC2/FSIC-2170/FSIC-2170A



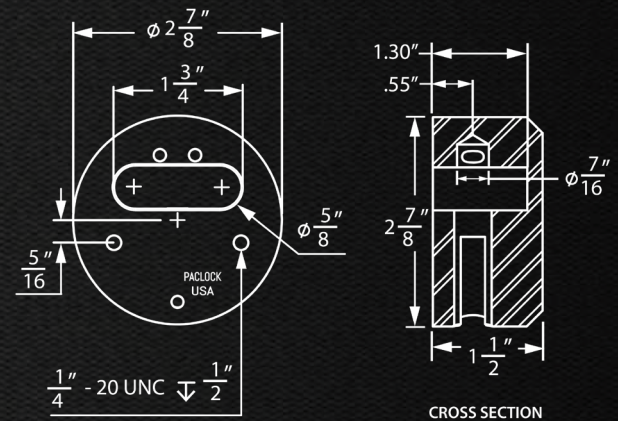
2171/KIK-2171/2171-IC2/FSIC-2171



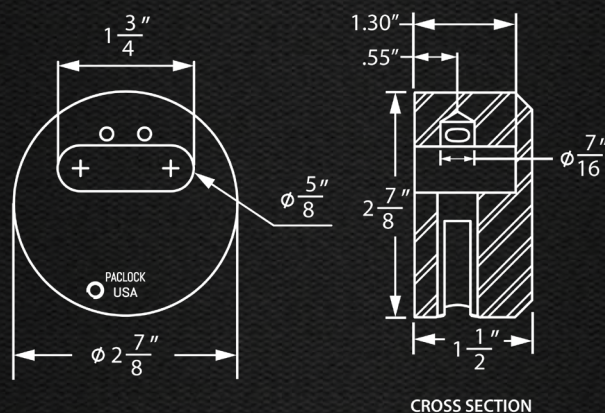
LFIC-Y6-400/LFIC-M32-400/LFIC-ASSA-400



LFIC-Y6-2171/LFIC-M32-2171/LFIC-ASSA-2171



LFIC-Y6-2170/LFIC-Y6-2170A/LFIC-M32-2170/LFIC-M32-2170A/LFIC-ASSA-2170/LFIC-ASSA-2170A



PACLOCK's HOCKEY-PUCK PRODUCT LINE QUICK REFERENCE COMPABILITY CHART

HOCKEY-PUCK PRODUCT LINE	Stepped Back		Flat-Back		Flat-Back w/ Mounting Holes	PAC-LINK Compatible
	Hard. Steel	Aluminum	Hard. Steel	Aluminum	Hard. Steel	Hard. Steel
6-Pin Standard Rekeyable (P0, PR1, PR2 Keyway)	400	400A	2170	2170A	Call for Info	2180
5, 6 & 7-Pin SFIC	400-IC2*	Call for Info	2170-IC2*	2170A-IC2*	2171-IC2*	2180-IC2*
Yale® & Medeco® Series-31 LFIC	LFIC-Y6-400*	Call for Info	LFIC-Y6-2170*	LFIC-Y6-2170A*	LFIC-Y6-2171*	LFIC-Y6-2180*
Medeco® Series-32 LFIC	LFIC-M32-400*	Call for Info	LFIC-M32-2170*	LFIC-M32-2170A*	LFIC-M32-2171*	LFIC-M32-2180*
ASSA® LFIC	LFIC-ASSA-400*	Call for Info	LFIC-ASSA-2170*	LFIC-ASSA-2170A*	LFIC-ASSA-2171*	LFIC-ASSA-2180*
Schlage® FSIC	FSIC-400*	Call for Info	FSIC-2170*	FSIC-2170A*	FSIC-2171*	FSIC-2180*
Abloy® Key-in-Knob	KIK-400*	Call for Info	KIK-2170*	KIK-2170A*	KIK-2171*	KIK-2180*
Standard Key-In-Knob	KIK-400*	Call for Info	KIK-2170*	KIK-2170A*	KIK-2171*	KIK-2180*

* Protected under U.S. Patent(s): 8,776,557 / 8,978,426

KEYING OPTIONS

KEYED DIFFERENT (KD):

Each padlock has its own unique key. This is the standard for all products unless requested otherwise.

KEYED ALIKE (KA):

All padlocks can be opened with the same key, offering convenience and eliminating multiple keys for those who use numerous padlocks.

MASTER KEYED (MK):

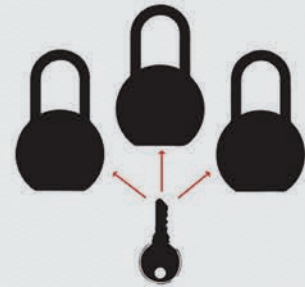
This system combines the benefits of Keyed Different and Keyed Alike. Each padlock has a unique key that cannot be used to open the other padlocks. But there is a “Master Key” that can open all of the padlocks in the system.

GRAND-MASTER KEYED (GMK):

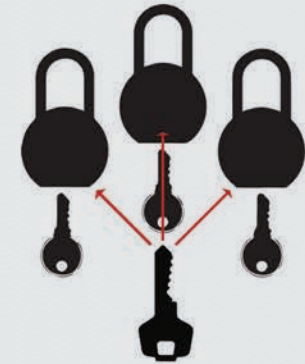
This system uses two or more “Master Key” sub-systems where all the padlocks can be opened by a “Grand-Master” key. However, the sub-systems remain independent of each other.



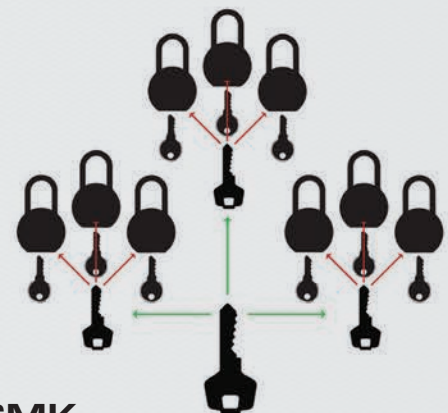
KD



KA



MK



GMK

TERMS & CONDITIONS

It's easy being a PACLOCK customer. We have one simple guiding principle:

"PACLOCK wants to do good business with good customers."

When we get asked what we mean by "good business with good customers," here are some of the answers that we offer:

Depend on Us: Our company is constantly finding ways to cut down our lead times by increasing our ability to push product out the door. We generally ship all orders, even highly custom orders, within 5 to 10 business days.

Minimum Orders: We are happy to ship small orders ~ so long as you are willing to pay small invoices. Generally, we prefer to ship a 6-piece minimum per lock style.

Express Order Fulfillment: Orders for any product can be put at the front of our production line. We charge an additional 15% of the total order to process and ship within your requested amount of time (minimum charge of \$15). We'll work with you to give you an anticipated lead time for this custom service.

Pay on Time: We are proud to be one of the last family owned lock manufacturers in the world and we depend on your timely payments to help us grow our business. Customers who consistently pay late won't be our customers for long.

Free Shipping: We will pay freight charges on all orders over US\$1,000.00 (based on net prices) to a single destination within the continental United States and Canada.

Domestic Shipping: We ship via UPS & USPS for our orders. We are willing to ship via FEDEX, DHL, or other carriers but will add a service charge to do so. Please call for details.

International Shipments: Please call and talk to us about shipping internationally. We have arrangements set up with forwarders but are willing to work with your forwarders as well.

Changing or Canceling an Order: Either of these situations drains value from a company. We will be as flexible as possible, but we will likely expect some value from you in return to accommodate your request.

Warranty & Returns: PACLOCK warrants our products against any manufacturing defect for the life of the product. If it is our mistake, then we will do what it takes to make it right.

The Fine Print:

Pacific Lock Company extends a limited lifetime warranty to the original user of the products against defects in material and workmanship. Upon return of the defective product to the Company accompanied by the statement of defects the Company will repair or replace the product at the discretion of the Company. This warranty is not transferable. The following costs, expenses and damages are not covered by the provisions of this limited warranty: (i) labor costs including, but not limited to, such costs for the removal and reinstallation of Products; (ii) shipping and freight expenses required to return the products to the Company or (iii) any other incidental, consequential, indirect, special and/or punitive damages, whether based on contract, warranty, tort (including, but not limited to strict liability or negligence), patent infringement, or otherwise, even if advised of the possibility of such damages. Some states do not allow the exclusion or limitation of incidental or consequential damages, so the above exclusion or limitation may not apply to you. Pacific Lock Company does not authorize any person to create for it any obligation or liability in connection with the Products. Pacific Lock Company's maximum liability under this warranty is limited to the purchase price of the product. This warranty gives you specific legal rights, and you may also have other rights, which vary from state to state. For warranty and shipping instruction contact: 661-294-3707. In no event will Pacific Lock Company be liable for incidental, consequential, indirect, special, or punitive damages including, but not limited to, loss of use of the products, loss of profits, loss of revenue, interest, lost goodwill, work stoppage, impairment of other goods, loss by reason of shutdown or non-operation, increased expenses of operation, or claims of customer's customers, whether based on contract, warranty, tort (including, but not limited to, strict liability or negligence), patent infringement, or otherwise, even if advised of the possibility of such damages. These terms and conditions, together with any attachments or supplements specifically referenced in these terms and conditions, constitutes the entire agreement between Pacific Lock Company and customer and supersedes all previous communications, representation, or agreements, either oral or written, between the parties hereto with respect to the subject matter hereof. No agreement or understanding varying or expanding these terms and conditions will be binding upon either party hereto unless it is in writing and signed by a duly authorized representative hereof.



25605 Hercules Street, Valencia, CA 91355
888.562.5565 / 661.294.3707 / Fax: 661.294.3097
www.paclock.com

© 2015 Pacific Lock Company All Rights Reserved.

All other trademarks and registered trademarks are the property of their respective owners and are used for identification purposes only.

Printed in the U.S.A. 08.2015